

SOLID TIMBER

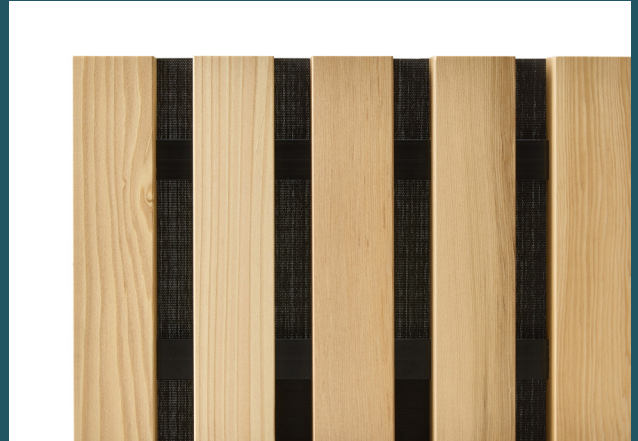
Profile Specification

3040 Series

Batten Size	28x40mm
Available Lengths	900mm - 3600mm
Effective Cover	296mm
Max Thickness	29mm
Substrate	solid timber
Finish Options	clear, tinted

SCREENWOOD

PANELS



PANELS are a high quality, simple and cost-effective linear solution for internal wall and ceiling applications. PANELS are supplied prefinished and assembled, and can be cut to specified lengths with the best yield determined from standard timber increments. Custom sizes and layouts may be available upon request.

3040 Series

3040-4



34mm spacing

3040-5



19.2mm spacing

3040-6



9.3mm spacing



Fire

PANELS are fire tested to AS5637.1 (Group 3). Group 2 FR MDF options are available.



Sound Absorption

PANELS have been independently tested and acoustically rated. Please contact us for more information.



Environment

MDF PANELS are certified for Global Green Tag™. Solid timber PANELS are PEFC™ certified.



Installation/ Product Compatibility

PANELS are supplied as prefinished and assembled modules to enable swift installation. Based upon project requirements, choose from six profile series in either solid timber or decorative fibreboard.



Emissions

PANELS have been VOC tested and exceed GBCA requirements for commercial fit outs.

SOLID TIMBER FINISHES

Hemlock



Clear White Wash Warm Grey

Spotted gum



Clear Walnut Espresso

Blackbutt



Clear White Wash Warm Grey

Western red cedar



Clear Walnut Espresso

WEIGHT SQ/M

	3040-4	3040-5	3040-6
HEM	8kg	9.9kg	11.7kg
SPG	15.2kg	18.8kg	22.5kg
BBT	13.9kg	17.2kg	20.5kg
WRC	5.7kg	7kg	8.3kg

Digital and printed finishes should be used as a guide only. Please request a sample to confirm your selection.

Profile Details

3040 Series

PANELS are assembled using a concealed bracket system, designed to visually minimise fasteners and enable flush mount installation. Black aluminum dovetail is recessed into the back of machined battens at 300mm centres. The dovetail construction ensures tensile strength and is reinforced with mechanical fixings. No adhesives are used in the assembly of PANELS.

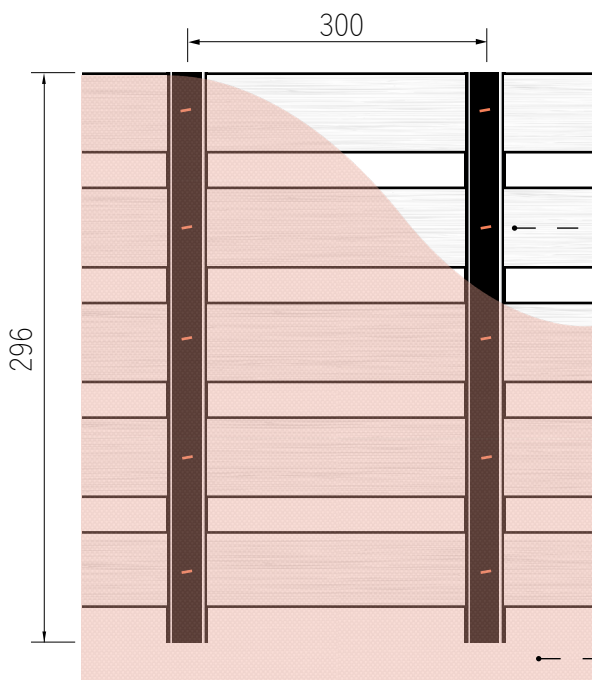
PANELS are supplied with thin SC15 black acoustic lining attached, but can be omitted for floating ceilings. For the highest acoustic performance, SCP50 thick acoustic backing is available.

Internal and external curves are achieved with a simple modification to the aluminium brackets prior to assembly.

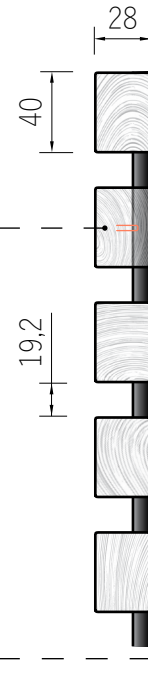
3040-5 Illustrated

Please see PANELS Installation Guideline for additional information.

Back View



End View



PANELS construction

Crown staple fixing*

SC15 black acoustic lining

Secured with staples/ overlap supplied

Side View

