

SOLID TIMBER

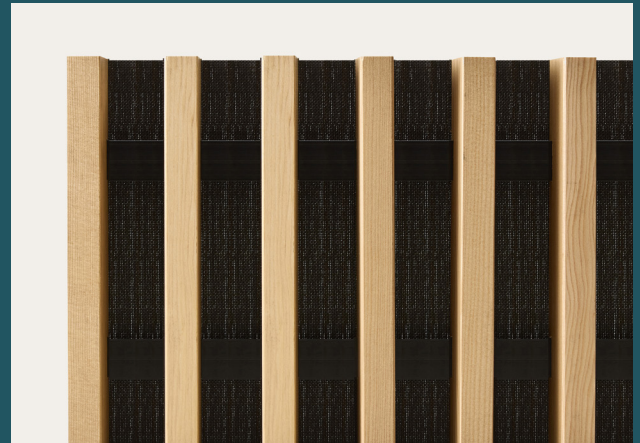
Profile Specification

4020 Series

Batten Size	38x17mm
Available Lengths	900mm - 3600mm
Effective Cover	296mm
Max Thickness	39mm
Substrate	solid timber
Finish Options	clear, tinted

SCREENWOOD

PANELS



PANELS are a high quality, simple and cost-effective linear solution for internal wall and ceiling applications. PANELS are supplied prefinished and assembled, and can be cut to specified lengths with the best yield determined from standard timber increments. Custom sizes and layouts may be available upon request.

4020 Series

4020-6	4020-7	4020-8
32.3mm spacing	25.3mm spacing	20mm spacing



Fire
PANELS are fire tested to AS5637.1 (Group 3). Group 2 FR MDF options are available.



Sound Absorption
PANELS have been independently tested and acoustically rated. Please contact us for more information.



Environment
MDF PANELS are certified for Global Green Tag™. Solid timber PANELS are PEFC™ certified.



Installation/ Product Compatibility
PANELS are supplied as prefinished and assembled modules to enable swift installation. Based upon project requirements, choose from six profile series in either solid timber or decorative fibreboard.



Emissions
PANELS have been VOC tested and exceed GBCA requirements for commercial fit outs.

SOLID TIMBER FINISHES

Hemlock



Spotted gum



Blackbutt



Western red cedar



WEIGHT SQ/M

	4020-6	4020-7	4020-8
HEM	7kg	8.1kg	9.2kg
SPG	13.2kg	15.3kg	17.4kg
BBT	12.1kg	14kg	15.9kg
WRC	5kg	5.8kg	6.5kg

Digital and printed finishes should be used as a guide only. Please request a sample to confirm your selection.

Profile Details

4020 Series

PANELS are assembled using a concealed bracket system, designed to visually minimise fasteners and enable flush mount installation. Black aluminium dovetail is recessed into the back of machined battens at 300mm centres. The dovetail construction ensures tensile strength and is reinforced with mechanical fixings. No adhesives are used in the assembly of PANELS.

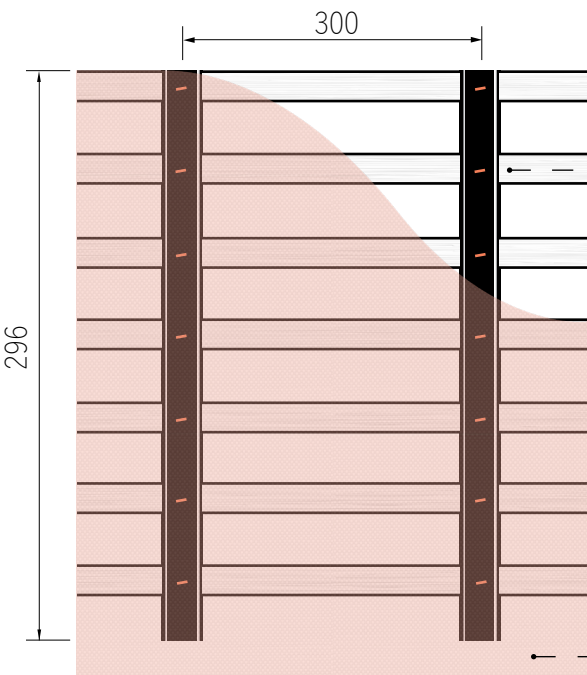
PANELS are supplied with thin SC15 black acoustic lining attached, but can be omitted for floating ceilings. For the highest acoustic performance, SCP50 thick acoustic backing is available.

Internal and external curves are achieved with a simple modification to the aluminium brackets prior to assembly.

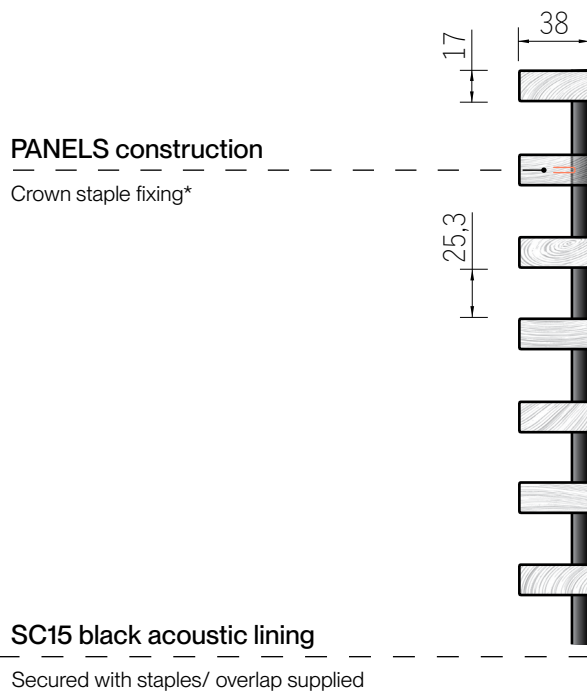
4020-7 Illustrated

Please see PANELS Installation Guideline for additional information.

Back View



End View



Side View

