

DECORATIVE FIBREBOARD

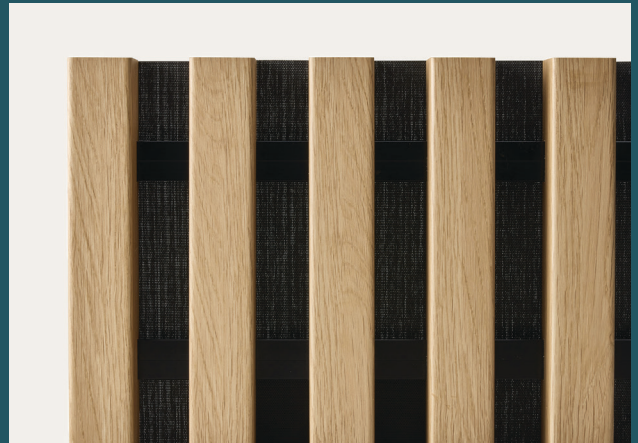
Profile Specification

Square 3232

Batten Size	32x32mm
Available Lengths	Derivatives of 2.7 and 3.6m
Effective Cover	296mm
Max Thickness	33mm
Substrate	EO MR MDF
Finish Options	Navurban™, Raw

SCREENWOOD

PANELS



PANELS are a high quality, simple and cost-effective linear solution for internal wall and ceiling applications. PANELS are supplied prefinished and assembled, and can be cut to specified lengths with the best yield determined from either 2.7 or 3.6m stock. Custom sizes and layouts may be available upon request.

Square 3232 Series

3232-4



42mm spacing
10kg per SQM

3232-5



27.2mm spacing
12.4kg per SQM

3232-6



17.3mm spacing
14.7kg per SQM



Fire

PANELS are fire tested to AS5637.1 (Group 3). Group 2 FR MDF options are available.



Environment

MDF PANELS are certified for Global GreenTag™. Solid timber PANELS are PEFC™ certified.



Emissions

PANELS have been VOC tested and exceed GBCA requirements for commercial fit outs.



Sound Absorption

PANELS have been independently tested and acoustically rated. Please contact us for more information.



Installation/ Product Compatibility

PANELS are supplied as prefinished and assembled modules to enable swift installation. Based upon project requirements, choose from six profile series in either solid timber or decorative fibreboard.

NAV DESIGNER SURFACES™

Navurban™



Silken™



Elements™



*Navurban Diamond™ offers an extra layer surface protection. Printed and online colours should be used as a guide only. Please request a sample to confirm your selection.

Profile Details

Square
3232

PANELS are assembled using a concealed bracket system, designed to visually minimise fasteners and enable flush mount installation. Black aluminium dovetail is recessed into the back of machined battens at 300mm centres. The dovetail construction ensures tensile strength and is reinforced with mechanical fixings. No adhesives are used in the assembly of PANELS.

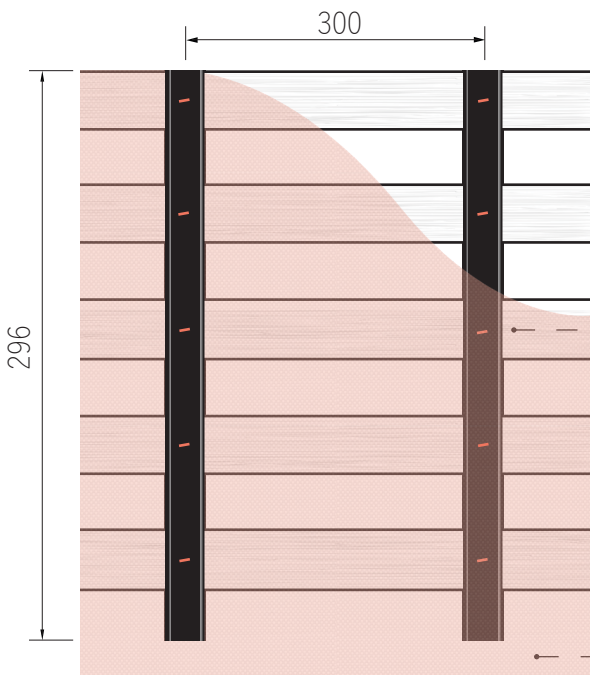
PANELS are supplied with thin SC15 black acoustic lining attached, but can be omitted for floating ceilings. For the highest acoustic performance, SCP50 thick acoustic backing is available.

Internal and external curves are achieved with a simple modification to the aluminium brackets prior to assembly.

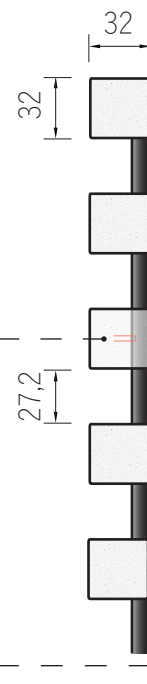
3232-5 Illustrated

Please see PANELS Installation Guideline for additional information.

Back View



End View



Side View

