

SCREENWOOD

MODULO®

The tongue and groove lining system for sculpted interiors.



MODULO®
GROUP 3
PAGES 3-6



MODULO®
GROUP 1
PAGES 7-17

SCREENWOOD

MODULO®

Range overview

MODULO® by Screenwood is the trusted Australian made tongue and groove lining for interior architects, designers, and builders seeking a cost effective, simple-to-install solution without compromise.

MODULO® Group 3 fibreboard is available in 10 sculpted profiles and is suitable for interior joinery, walls, curves and ceilings.

MODULO® Group 1 is crafted from aluminium and is designed for the highest fire-rated interiors with a choice of 3 profiles.



Product Applications

Applications	MODULO® Group 1 (Aluminium)	MODULO® Group 3 (Fibreboard)
Curves	✓	✓
Walls	✓	✓
Ceilings	✓	✓
High fire-rated interiors	✓	
Joinery (drawers, doors, cupboards)		✓
Lengths (m)	2.7, 3.6, 5.4	2.7, 3.6, 5.4
Effective cover (mm)	100	100
Low maintenance	✓	✓
Seamless colour match across NAV and Screenwood products	✓	✓
Over 30 Navurban finishes	✓	✓
Profiles	3	10
Australian made	✓	✓
GreenTag certified		✓
PEFC certified		✓
Recyclable packaging	✓	✓

SCREENWOOD

MODULO®

Group 3 Installation Guide for walls, ceilings and joinery

Suitable Applications

MODULO® Group 3 is a tongue and groove lining board made from Moisture Resistant (MR) Fibreboard. It is designed for ceiling, walls, curves and joinery applications in both vertical and horizontal orientations. It is not suitable for use in wet areas or external use. For resistance to wear and UV please see our technical data sheet.

Before you begin

Fixing

- Screenwood recommends that MODULO® Group 3 should be screw fixed to timber battens or furring channel spaced at a maximum of 600mm centres (see Figure 1 in this section).
- An 8-gauge countersunk screw should be used for fixing, and located on the panels using the centring groove on the tongue. A polyurethane adhesive is to be applied to the furring channel prior to MODULO® Group 3 being fitted (Fig 1).

Cutting

- Cutting of MODULO® Group 3 should be done by qualified trades using a drop saw or panel saw with carbide tipped blades and can be created beautifully with the use of routers, trimmers and other joinery tools typically used when fabricating MDF.

Curving

- MODULO® Group 3 can be curved on both internal and external curves at various radii depending on the profile ranging from 170mm - 530mm. (See note on Finishing) Options.)

Moisture

- Although MODULO® Group 3 is manufactured from moisture resistant (MR) MDF, the end grain of MODULO® Group 3 cannot get wet. Section ends should be sealed in installations where accidental ingress of water or moisture may occur.
- MODULO® Group 3 used for walls should be kept at least 20mm above a floor surface and care must be taken when floors are being mopped/cleaned. The warranty does not cover damage from water ingress.
- In applications where there is a risk of exposed MDF coming in contact with water potentially affecting the exposed MDF section of each panel, you should look to apply a water based polyurethane clear sealer like the Cabots Cabothane Clear.

SCREENWOOD

MODULO

Group 3 Installation Guide for walls, ceilings and joinery

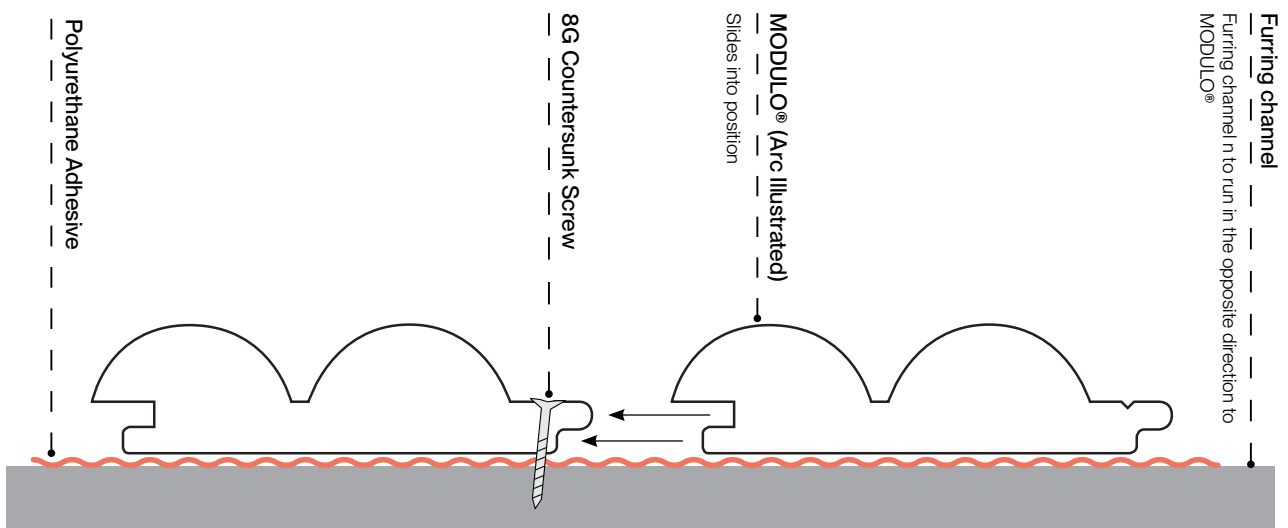
Joints

- MODULO® Group 3 may be butt jointed where required, however alignment of the adjoining panel must be perfect for a seamless joint. Butt joints should be staggered to avoid straight unsightly join lines. If a straight joint is desired, we recommend an expressed joint of 5mm.
- Expansion joints for MODULO® Group 3 must be considered on all installations where the runs exceed 5.4m in either direction. Consideration of the suitability of MODULO® must be taken prior to purchase.

Profile Weights

- For MODULO® Group 3 profile weights, please refer to the Technical data sheet available on our website when calculating load capacities found at [screenwood.com.au/range/modulo](https://www.screenwood.com.au/range/modulo) or contact our team for information.

Figure 1. Glue profile to wall or ceiling, concealing screws



Finishing options

MODULO® Group 3

MODULO® Group 3 can be finished in a variety of ways including return mitres, rebated corners, ABS edge tapes, aluminium trims, matching timber trims or sealing ends with paint.

Curves

MODULO® Group 3 can accommodate curves by cutting a 3mm wide relief into the back of the panels, to a depth 1.5mm from the panel face.

The relief cut panels can be manipulated during installation to adhere to concave or convex surfaces, keeping within the maximum radius. Profile depth and maximum radius are provided in the individual profile detailing spec sheets.

Figure 2. Relief cuts allow the profile to curve



Corners

MODULO® Group 3 can be mitred for a seamless corner finish with both vertical and horizontal applications.

Vertical mitred edges

1. Cut the end of our panel (horizontally or vertically depending on the end requiring the desired finish) using a panel saw.
2. Make a 45 degree cut to end. You will need an additional panel to cut another 45 degree section from, for joining. Use a good quality PVA wood glue.

Figure 3. Vertical mitre



Figure 4. Horizontal mitre



Finishing options

MODULO® Group 3

Edge Tape

MODULO® Group 3 can accommodate 1.0mm edge tape which can be supplied by New Age Veneers (NAV) in a matched finish for edge lining.

Figure 5. Edge tape from NAV



Painted finish:

[Dulux paint colours to match our standard Navurban™ finishes can be found on our Resources page in our website.](#)

These recommendations are a guide only and should be tested prior to application.

Preparation is always critical when applying a painted finish, sanding the profiles prior to undercoating and light sanding between coats is required to ensure a high quality finish. Screenwood doesn't recommend applying MODULO® to curved areas when using a painted finish.

Other trim details

- Board in the same finish can be purchased/supplied through New Age Veneers (NAV), starting from 6mm thick up to 50mm thick.
- Aluminium angles (supplied by others) can be utilised for shadowline trim or framing.

Group 1 Installation Guide for high fire-rated interiors



Suitable Applications

MODULO® Group 1 is manufactured from aluminium and is suitable for internal ceiling, curves and wall applications. It is not warranted for use in external areas.

MODULO® Group 1 is designed for use in areas where a fire rating of Group 1 or Group 2 is required. For all other applications, MODULO® Group 3 may be a more suitable solution.

Before you begin

Fixing

- The MODULO® Group 1 sections are designed to be screw fixed through each tongue where it intersects the furring channel or battens on the prepared wall or ceiling.
- MODULO® Group 1 is suitable for self-drilling screws however pre-drilling may be required depending on the specific fastener.

Cutting

- The MODULO® Group 1 sections can be cut to size using a Panel saw or track saw with aluminium blade.
- Flats on the back of the profile allow for adhesive fixing when profiles require cutting to fit the space.

Curving

- MODULO® Group 1 can be installed on a both internal and external curves of a radius up to 500mm using the notches on the back of the profile to gently bend the profile.
- For curves tighter than a 500mm radius, a clamp can be used to manipulate the profile along engineered crease lines.

Profile Weights

- For MODULO® Group 1 profile weights, please refer to the Technical data sheet available on our website when calculating load capacities found at [screenwood.com.au/range/modulo](https://www.screenwood.com.au/range/modulo) or contact our team for information.



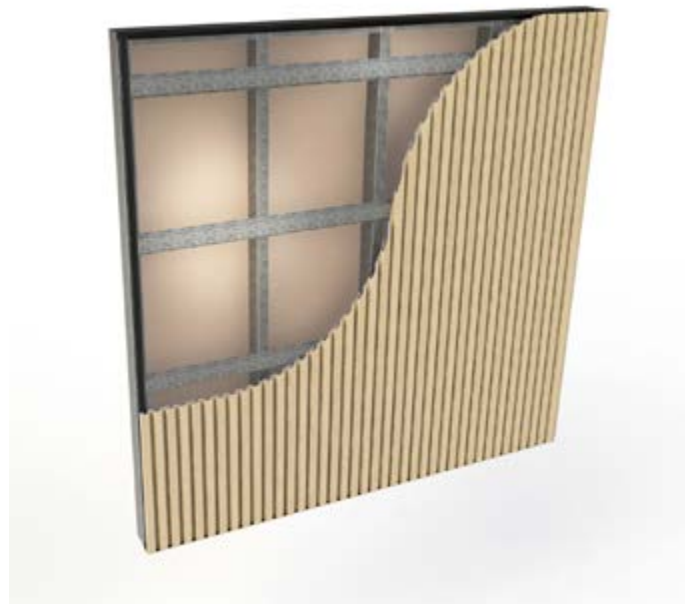
Flat wall installation

MODULO® Group 1

Recommended Flat Wall Installation Process

You will need:

- MODULO® Group 1 in your specified lengths including wastage
- Top hat, furring channel or battens
- Aluminium trims for top and bottom edges
- Starter bead
- Corner trim
- Measuring device
- Level
- Panel saw or track saw with aluminium blade
- Screws
- Clamp for radius tighter than 500mm
- High bond tape
- Silicone adhesive



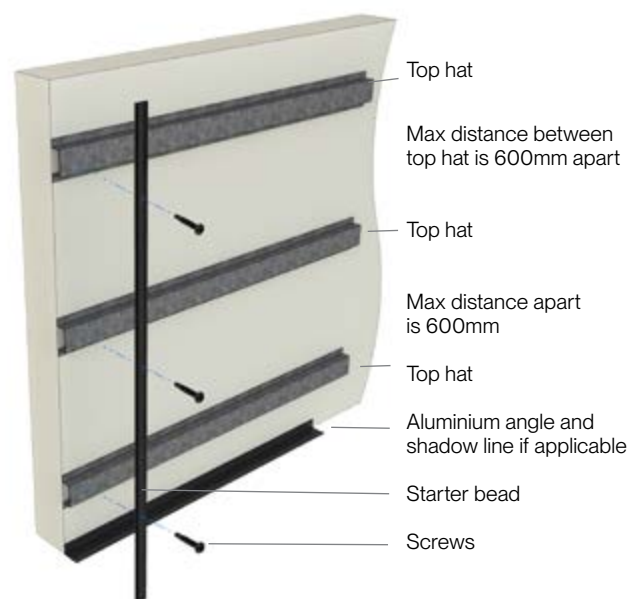
Cross section of MODULO wall installation

Simple steps for Flat Wall Installation:

(Steps 1 -3 see Fig. 1)

1. Ensure the prepared wall surface is true and plumb. Ensure protective packaging is removed from MODULO® before installing.
2. Fix top hat or battens at the top and bottom of the wall at the heights where the panels are to be installed.
3. In addition to top and bottom, install additional top hat parallel to the top and bottom channels at a maximum distance of 600mm.

Figure 1. Wall preparation with top hat



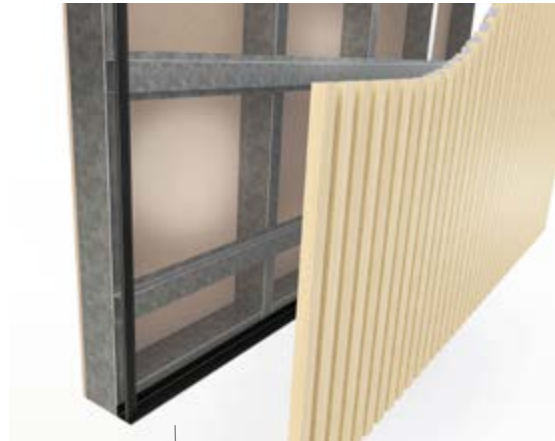


Flat wall installation

MODULO® Group 1

4. If installing top and bottom aluminium trims, install the bottom trim allowing for the desired shadow line spacing (if applicable).

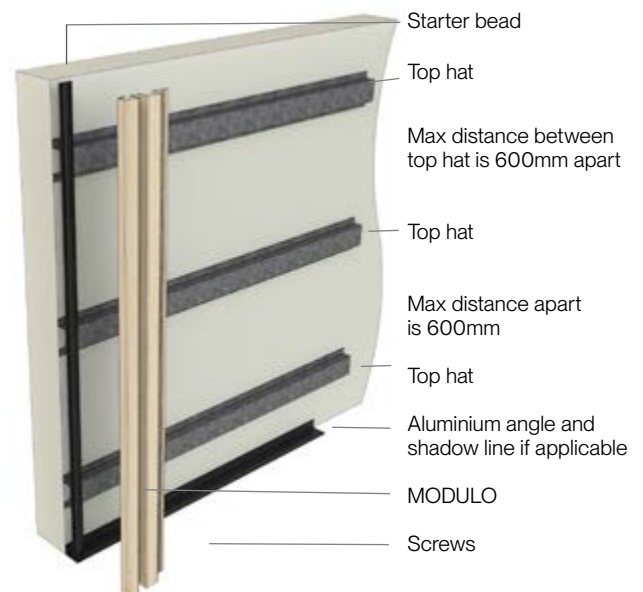
Figure 2. Close up of wall with aluminium angle



Aluminium angle and shadowline if applicable.

5. Install the starter bead to the furring channel ensuring it is plumb. (See fig. 3)

Figure 3. Install starter bead



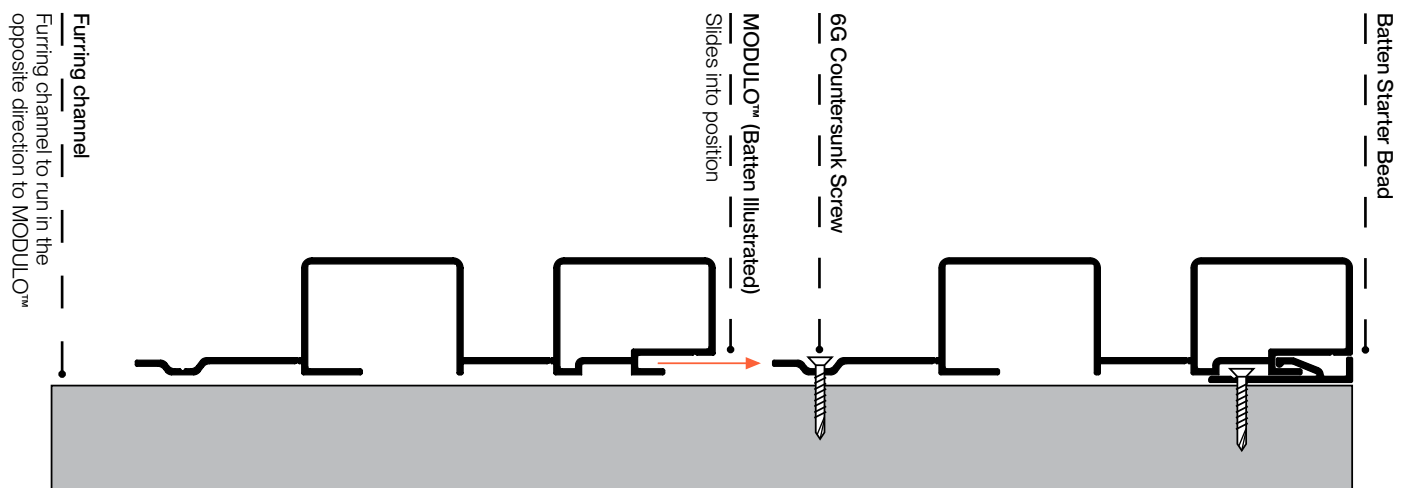


Flat wall installation

MODULO® Group 1

6. Screw fix each section through each tongue where it intersects the furring channel or battens. Pre-drilling may be required. (Refer to Fig. 4).

Figure 4. Concealed screw installation of MODULO™ Group 1



7. Continue fixing each section.

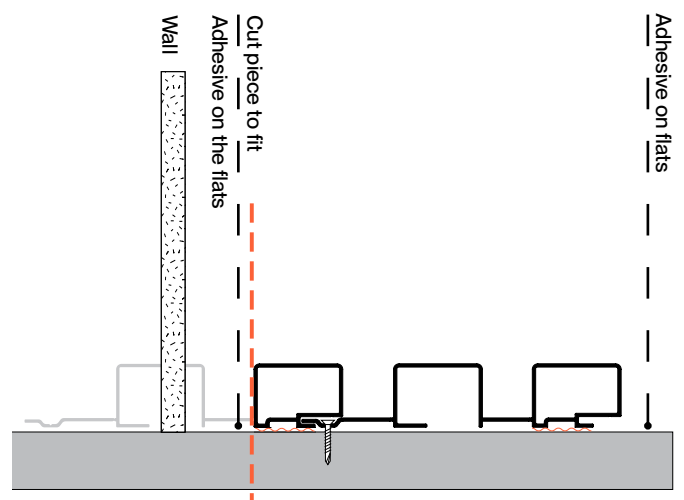
8. At the end of the run, the last piece may need to be cut at a specific width using a panel saw or track saw with an appropriate aluminium blade and safety measures in place.

Use flats designed into the extrusion for the use of high bond tapes (such as 3M VHB 4910) & silicone adhesives. (See Fig. 6)

9. Wipe down with a clean damp cloth.

END.

Figure 6. (Example location of cuts) and adhesive





Curved wall installation

MODULO® Group 1

Recommended Curved Wall Installation Process

For curved wall installation, follow steps 1-9 for Flat Wall Installation (pages 8-11).





Ceiling installation

MODULO® Group 1

Recommended Ceiling Installation Process

You will need:

- MODULO® Group 1 in your specified lengths including wastage
- Top hat, furring channel or battens
- Aluminium trims for top and bottom edges
- Starter bead
- Corner trim
- Measuring device
- Level
- Panel saw or track saw with aluminium blade
- Screws
- Clamp for radius tighter than 500mm
- High bond tapes
- Silicone adhesive



Simple steps for Ceiling Installation.

Ceiling Preparation

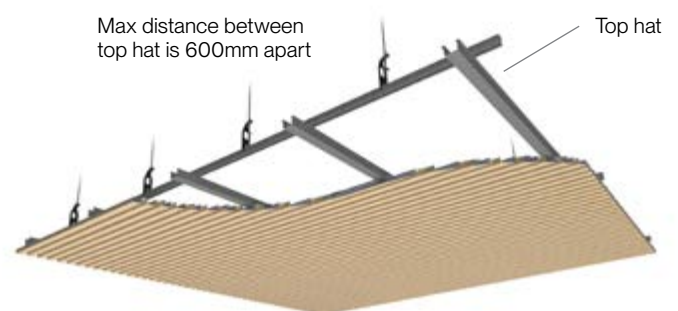
1. If installing on a suspended ceiling the MODULO® panels are installed in the same direction as the TCR and fixed off where they intersect the furring channel. For direct fix ceilings, fix the top hat in the opposite direction to the MODULO® panels.

2. The furring channel or top hat should be placed within 200mm of the walls and at a maximum of 600mm centres.

3. A shadowline angle is a common detail used around the perimeter and this should be fixed to the wall at the nominated height prior to installing the panels.

4. Ensure the ceiling is true and the variation is no greater than 3mm per metre.

Figure 1. Suspended Ceiling





Ceiling installation

MODULO® Group 1

Ceiling Installation

1. Fix the start trim at the position where the first MODULO® profile is to be installed.

2. Slot the groove of the first board into the start trim and fix through the tongue using an appropriate 6g screw.

Screw fix each section the each tongue where it intersects the top hat. Pre-drilling may be required. Use flats designed into the extrusion for the use of high bond tapes (such as 3M VHB 4910) & silicone adhesives.

3. Continue fixing the MODULO® panels across the ceiling.

4. The final panel will need to be fixed using VHB tape and / or silicone adhesive on the nearest flat on the back of the extrusion. It is also recommended that a bead of adhesive is used in the final tongue and groove channel for maximum adhesion.

5. Wipe down with a clean, damp cloth.

Figure 2. Suspended Ceiling

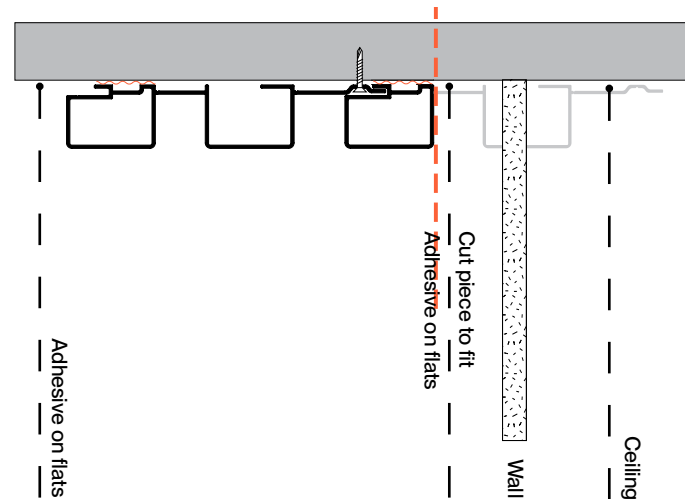
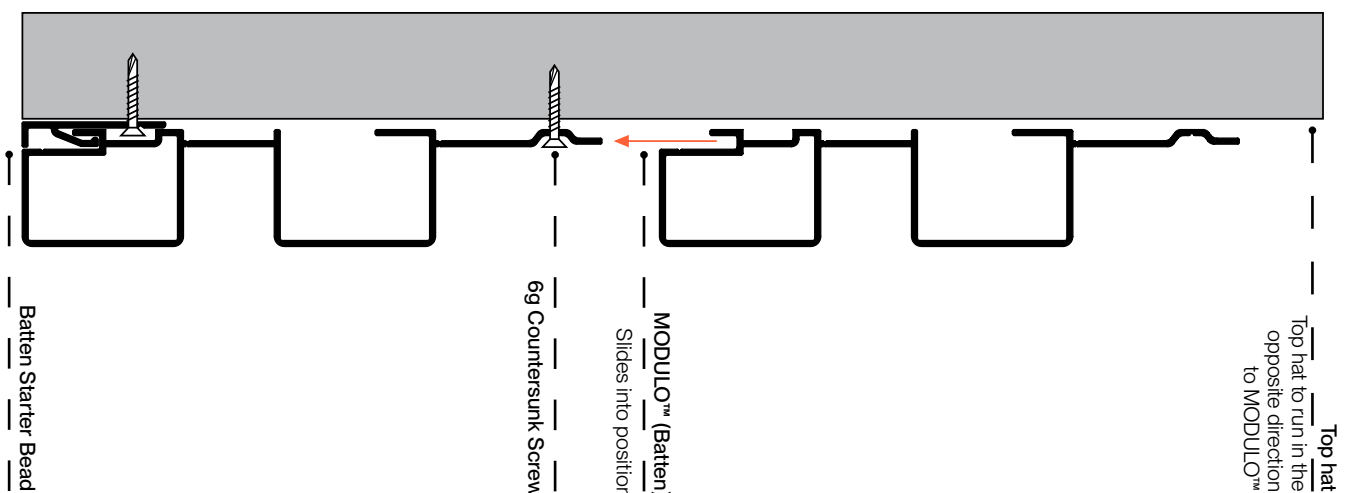


Figure 3. Suspended Ceiling





Finishing options

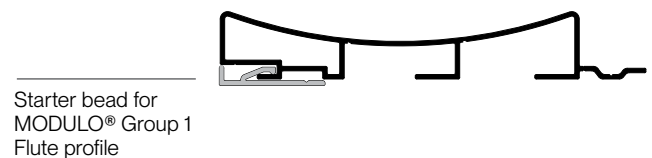
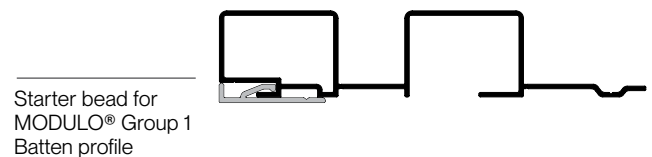
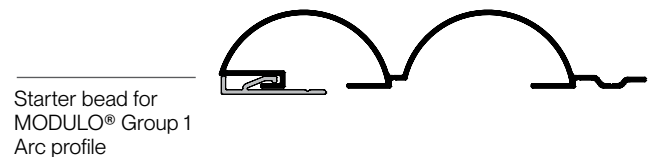
MODULO® Group 1

MODULO® Group 1 can be finished in a variety of ways including reverse angles, rebated corners, aluminium trims, matching timber trims.

Screenwood Accessories:

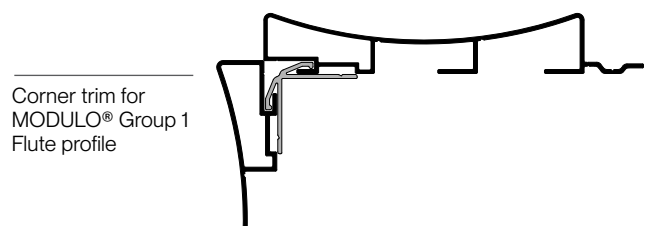
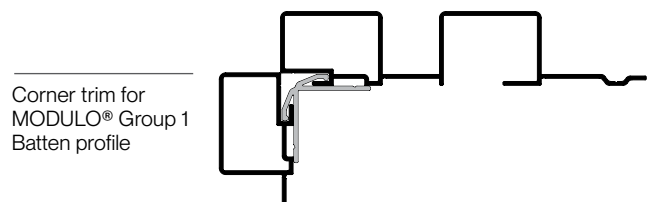
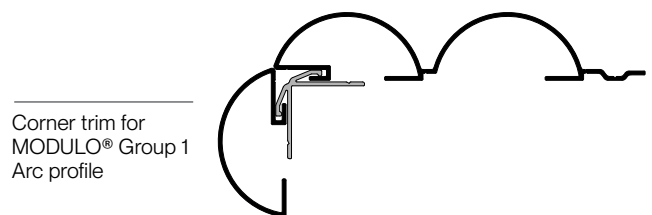
Screenwood Starter bead

For a professional finish, use Screenwood Starter bead for walls. Select the custom starter bead to match the profile you are using.



Screenwood Corner trim

For a seamless corner finish with both vertical and horizontal applications, use a Screenwood Corner trim.





Finishing options

MODULO® Group 1

Screenwood Accessories:

Screenwood Repair Dots

Should your product be damaged with a scratch or dent in the future, Screenwood repair dots will minimise the visible look of any superficial damage. Available in a pack of 6 with small, medium and large dots in the same NAVURBAN finish.



Repair dots will minimise the appearance of superficial damage.



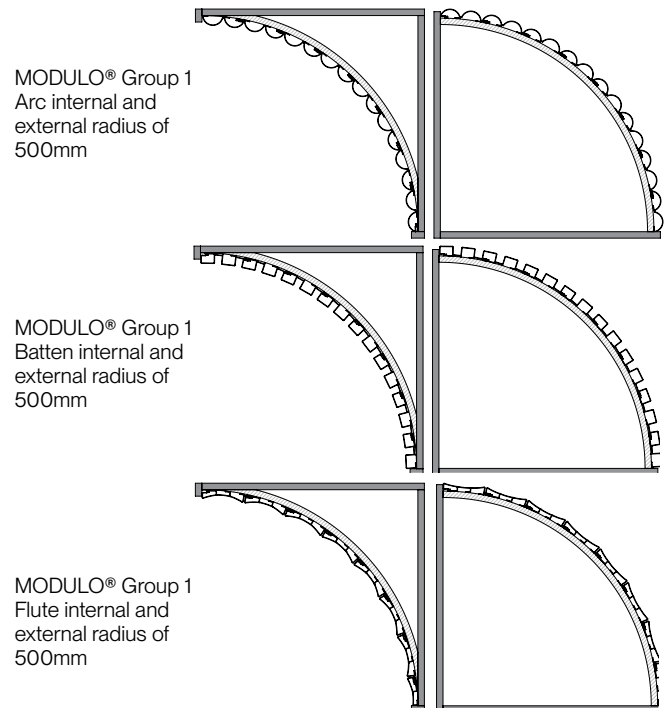
Finishing options

MODULO® Group 1

Curving

MODULO® Group 1 profiles have a curve radius of 500mm.

To achieve a tighter radius, a clamp may be used to curve the engineered notches on the back of the profile.



Edging

Unlike MODULO® Group 3, MODULO® Group 1 profiles are made from aluminium so edging tape is not suitable for use with this product. Instead, Screenwood recommends purchasing an off-the-shelf aluminium edging (powder coated in a suitable finish colour) for top and bottom edging.



Aluminium edging can finish ends and create shadowline detailing.





Finishing options

MODULO® Group 1

Cutting

The MODULO® Group 1 sections can be cut to size using a Panel saw or track saw with aluminium blade. Flats on the back of the profile allow for adhesive fixing when profiles require cutting to fit the space.

Apply adhesive to flats when cutting to fit space

