

Product Guide

# Modulo<sup>®</sup> Acoustic

The prefinished Group 1 tongue and groove system for acoustic performance, superior fire protection and aesthetics.

[screenwood.com.au](http://screenwood.com.au)  
+61 2 9521 7200  
[hello@screenwood.com.au](mailto:hello@screenwood.com.au)





Modulo® Acoustic, Mesa  
finished in NAVURBAN™  
Albany Oak

For over 20 years, we've proudly collaborated with leading interior architects and designers, shaping rich and sustainable spatial experiences that enhance comfort, well-being, and a deeper connection to nature.

The Modulo® Acoustic tongue and groove lining presents a technically and visually resolved solution for interiors. With high acoustic performance and a Group 1 fire rating, it meets rigorous and ever-evolving industry design standards - without compromising on aesthetics.

# Modulo® Acoustic

Modulo® Acoustic prefinished tongue and groove lining is meticulously designed to resolve crucial modern interior design challenges.

Incorporating ultra-realistic olefin woodgrain finishes, it integrates Group 1 fire compliance, high acoustic performance, and unmatched design versatility, making it ideal for interiors where safety, functionality, and aesthetics are paramount.

## Product highlights

---

### Acoustic performance

Achieves NRC 0.75 when installed as recommended.

### Fire certified

Group 1 fire-rated, tested to AS5637.1 and AS/NZS 1530.3:1999.

### Unprecedented design versatility

Suits vertical, horizontal and sculptural applications.

### Premium finishes

Extensive choice of durable NAVURBAN™ finishes.

---

### World-class sustainability

Global GreenTag™ certified GreenRate Level B and GreenTag PHD PlatinumHEALTH™.

### Efficient installation

Lightweight, easy and cost-effective to install.

### Low maintenance

Easy cleaning and no annual staining.

### Australian made

Designed and crafted in Australia by Screenwood.

---

The Modulo® tongue and groove system is also available in Group 1, Group 2 FR and Group 3 MR substrates.



# A premium choice for stylish interior soundscaping

A high-performance all-rounder, Modulo® Acoustic allows you to push the boundaries of biophilic and environmental design while optimising acoustic comfort and fire safety.

---

## Suitable applications

- High-occupancy and assembly interior projects.
- Internal ceilings and walls with acoustic requirements.
- Group 1 fire-rated interiors.
- Any projects requiring an ultra-realistic woodgrain acoustic lining for higher fire-rated interiors.

---

## Suitable markets

Aged care

Childcare

Commercial

Education

Government

Healthcare

Hospitality

Hotels and clubs

Transport hubs

Multi-res developments

Public buildings

Retail

---

Note: This product is not warranted for external use.

**Modulo® Acoustic, Mesa**  
finished in NAVURBAN™  
White Mountain Oak



# Visually and technically resolved design

---

## Substrate overview

Modulo® Acoustic is crafted from aluminium. The sculptural profiles are wrapped with durable NAVURBAN™ ultra-realistic finishes and have a black acoustic textile applied to the back face.

---

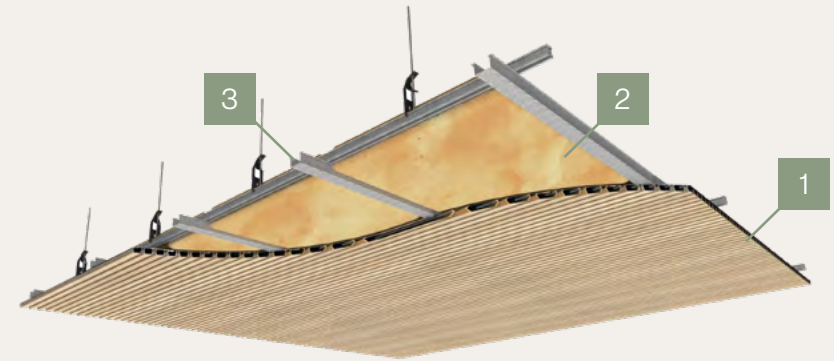
## How it works

Modulo® Acoustic wall and ceiling installations are acoustically rated for reverberation control when installed as recommended (see diagram).

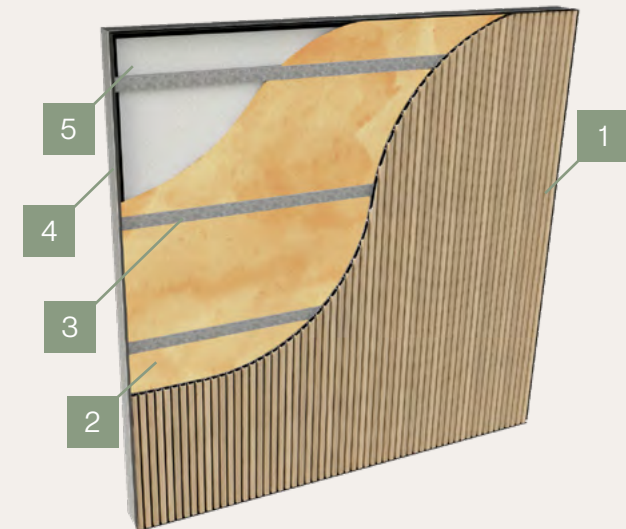
The system works by allowing sound to be absorbed through the substrate's perforations and further absorbed into the acoustic insulation installed behind the Modulo® Acoustic lining.

---

## Ceiling installation



## Wall installation



- 1 Modulo® Acoustic lining
- 2 Acoustic insulation as tested
- 3 Furring channel/top hat
- 4 Aluminium trim, if required
- 5 Sound transmission barrier (e.g. plasterboard)



# Comprehensive Testing and Certifications

---

## Acoustic performance

Achieves NRC 0.75 when installed as recommended.

---

## Fire certified

Group 1 fire-rated, tested to AS5637.1 and AS/NZS 1530.3:1999.

---

## UV resistant

NAVURBAN™ tested for exposure in indoor applications to ASTM D4459.

---

## Low VOC

Exceeds GBCA requirements for commercial fitouts. Tested for organic emissions to ASTM D5116-2017.

---

## Resistant to wear

NAVURBAN™ tested for abrasion resistance to AS 1580.

---

## World-Class Sustainability

Global GreenTag™ certified GreenRate Level B and GreenTag PHD PlatinumHEALTH™.

---

## Light Reflectance Value (LRV)

NAVURBAN™ tested for exposure in indoor applications to AS/NZS 1428.1.

---

Results available on request.

---

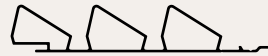
# Choose your profile

## Dome



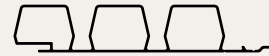
<b>Available length</b>	2.7m, 3.6m, 5.4m
<b>Effective cover</b>	100mm
<b>Max thickness/depth</b>	22mm
<b>Weight</b>	10.5kg/m <sup>2</sup>

## Louvre



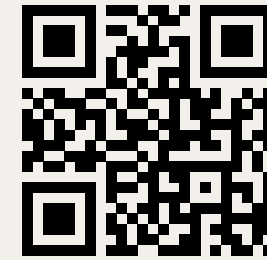
<b>Available length</b>	2.7m, 3.6m, 5.4m
<b>Effective cover</b>	100mm
<b>Max thickness/depth</b>	22mm
<b>Weight</b>	10.5kg/m <sup>2</sup>

## Mesa



<b>Available length</b>	2.7m, 3.6m, 5.4m
<b>Effective cover</b>	100mm
<b>Max thickness/depth</b>	22mm
<b>Weight</b>	10.5kg/m <sup>2</sup>

## Order profile samples



Scan the code or visit  
[screenwood.com.au/modulo/acoustic](https://screenwood.com.au/modulo/acoustic)



**Modulo® Acoustic, Dome**  
finished in NAVURBAN™  
Tablelands

# Choose your finish

Modulo® Acoustic lining is profile-wrapped in premium NAVURBAN™ non-PVC Olefin decorative film. Choose the ideal finish from our extensive range to complement your project vision.

## Available finishes

---

### NAVURBAN™ range



Sustainable and functional, the NAVURBAN™ range is a premium timber alternative. The innovative surface technology features 3D embossed textural woodgrain patterning for an ultra-realistic timber aesthetic.

---

### NAVURBAN Diamond™ range



This technologically advanced version of the NAVURBAN™ range features the same ultra-realistic woodgrain aesthetic with a reinforced UV-coated top layer for diamond-strength durability.

---

### NAVURBAN Elements™ range



With industrial characteristics and on-trend tones, NAVURBAN Elements™ brings your project to life with a smooth texture and patina-look finish.

---

### NAVURBAN Silken™ range



This minimalist, sophisticated finish creates a high-quality aesthetic in contemporary spaces. The range is available in six subtle solid colours that evoke a sense of calm.

---

### View our extensive collection of finishes



Our collection of finishes can change to reflect interior colour forecasts and innovations. For the most up to date finishes, please visit [screenwood.com.au/finishes](https://screenwood.com.au/finishes).

---

## Finish benefits

---

### Connecting with nature by design

Choose a NAVURBAN™ or NAVURBAN Diamond™ finish for an ultra-realistic textural timber aesthetic featuring 3D-embossed woodgrains.

---

### NAVURBAN™ advantages:

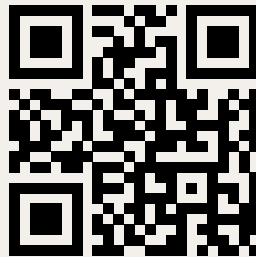
- Scratch resistant
  - Stain and water resistant
  - Anti-bacterial
  - UV resistant
  - Low maintenance  
(wipe down with warm, soapy water)
  - Low VOC
  - NAVURBAN Diamond™ offers an extra layer of protection for ultimate durability.
- 

### Consistent project finishes

Benefit from superior, visually consistent finish matching across prefinished Screenwood and NAVURBAN™ product surfaces.

---

### Order finish samples



Scan the code or visit  
[screenwood.com.au/samples](https://screenwood.com.au/samples)



Digital and printed finishes are for reference only. For accurate representation, please visit [screenwood.com.au/samples](https://screenwood.com.au/samples).

# In-built sustainability

---

## Australian-made for sustainability control

We proudly manufacture this product in Australia to control sustainable business practices from start to finish.

---

## Global GreenTag™

Modulo® Acoustic has achieved Global GreenTag™ certification to Level B and the PlatinumHEALTH™ rating. This certification aligns with your green building and sustainability goals by ensuring the product meets stringent world-class standards for health and safety, non-eco-toxicity, post-consumer recycled content, waste reduction, and compliance with environmental and labour regulations.

---

## Green Star rating credits

Using Global GreenTag™ certified Modulo® Acoustic enables you to access product credits towards the Green Star rating system administered by Green Building Council Australia.

---

## Ethical sourcing and supply chain transparency

The primary substrate and acoustic textile in Modulo® Acoustic are sourced from ethical suppliers who comply with stringent Global GreenTag™ criteria, ensuring sustainability throughout the value chain.

---



All our products are designed and made in Australia at our factory in Kirrawee, NSW.



# Project gallery

Modulo® has been selected by leading interior architects, designers, and builders for prestigious projects, including the world-class, award-winning Allianz Stadium, IMAX® Sydney, Perth City Library, The Lakes Golf Club, Wyvern Private Hospital, ACT Law Courts, Western Sydney Conference Centre, and Garangula Gallery.

## Need more inspiration?

Visit [screenwood.com.au/projectgallery](https://screenwood.com.au/projectgallery) and be inspired by our regularly updated case studies.





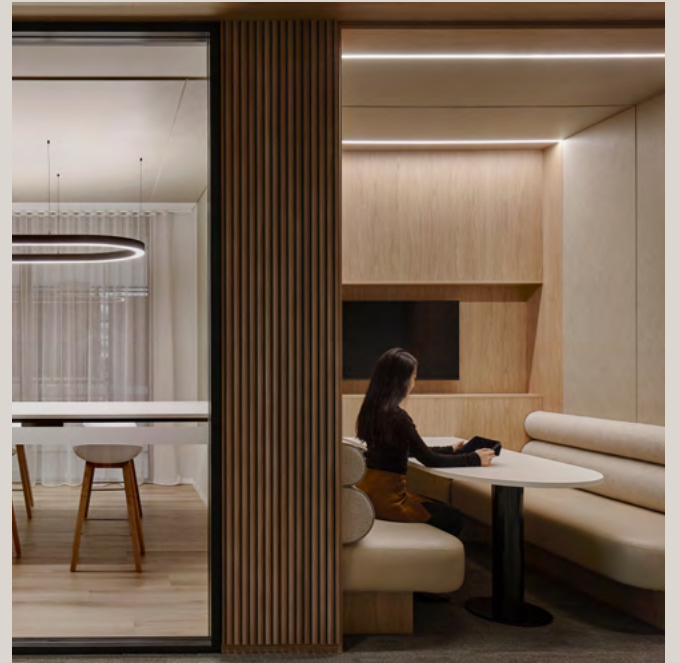
Left: Modulo® Acoustic, Mesa  
finished in NAVURBAN™  
Albany Oak

Right: Modulo® Acoustic, Mesa  
finished in NAVURBAN Diamond™  
Box Wood





**Modulo® Acoustic, Dome**  
finished in NAVURBAN™  
Tablelands



# How to specify

---

<b>Product</b>	Screenwood Modulo® Acoustic
<b>Application</b>	Internal
<b>Substrate</b>	Aluminium
<b>Fire Rating</b>	Group 1
<b>NRC</b>	0.75
<b>Profile</b>	Select applicable profile: Dome Louvre Mesa
<b>Length</b>	Available lengths: 2.7m, 3.6m, 5.4m
<b>Finish</b>	Insert selected finish (e.g. NAVURBAN™ Toorak)

---

# Ordering, delivery and installation

---

## How to order

To place an order or request a quote, visit [screenwood.com.au](https://www.screenwood.com.au) or contact our expert team on +61 2 9521 7200.

---

## Delivery time

Approximately 4 to 6 weeks, confirmed upon receipt of deposit.

---

## Express orders

Please contact us to confirm the timeframe.

---

## Minimum order quantity

A set-up charge applies on quantities below our minimum order quantity of 108 linear metres.

---

---

## Installation and finishing

Modulo® Acoustic is a prefinished, lightweight aluminium substrate that offers fast and cost-effective installation.

- It is easy to carry, cut, and fix, ensuring a fast installation - no componentry or prep work is required.
- Can be installed using off-the-shelf top hat/ furring channels and screws instead of expensive, proprietary systems.
- Easy vertical break points to allow for various end-point finishing and curving.
- Off-the-shelf aluminium end panels can be used for edging and reverse angles.

For comprehensive installation and finishing instructions, please view our **Installation Guide**.

For further resources, visit [screenwood.com.au/resources](https://www.screenwood.com.au/resources).

---



## Book an on-site project consultation

An expert will visit your project site with a complete sample kit and provide technical guidance, specifying advice, pricing, and quotes. Call **+61 2 9521 7200** or email **hello@screenwood.com.au** to book your consultation today.

# About Screenwood

We empower visionary interior architecture by championing the principles of strength, utility, and beauty in architectural and acoustic decorative lining innovations.

As designers and manufacturers, we strive to create a positive impact through technical expertise, master craftsmanship, and genuine care for people and the planet.

We're proud to earn customer trust through consistency, delivering meticulously engineered products and systems that set the benchmark for performance, cost-effectiveness, and ease of installation.



**Modulo® Acoustic, Mesa**  
finished in NAVURBAN™  
Ravenswood

# One architectural product family. Unlimited design potential.

## Modulo®



The trusted tongue and groove panelling system for interior architects and designers seeking a cost effective, simple-to-install solution without compromise. Modulo® is available in Group 1, 2, and 3 fire-rated substrates as well as a Group 1 acoustic version - all with Global GreenTag™ certifications to align with your sustainable building vision.

## Panels



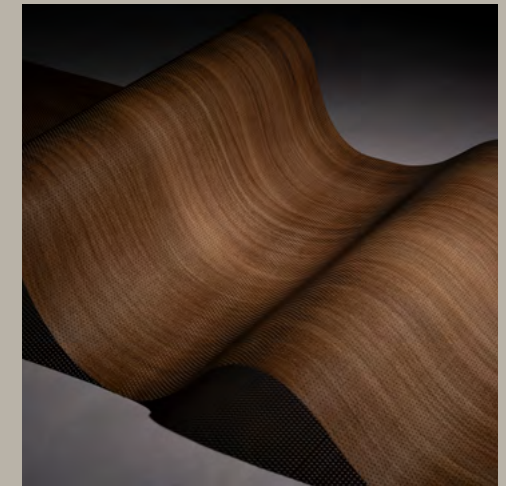
Our prefinished and preassembled acoustic linear batten system delivers an NRC of up to 1.0. The Panels system is available in a range of profiles in PEFC™ solid timber or fibreboard prefinished in NAVURBAN™ olefin film.

## Stix®



The Stix® collection presents a sophisticated range of prefinished, loose decorative battens, technically designed to complement our Modulo®, Panels and Soundlina® systems. Global GreenTag™ certified Stix® battens are available in Group 2 and 3 fire-rated substrates.

## Soundlina®



Winner of the 2024 Good Design Award, Soundlina® is the world's first-to-market perforated architectural wall covering with high acoustic performance. Boasting an NRC of 0.85, a Group 1 fire rating and Global GreenTag™ certification, Soundlina® is prefinished in NAVURBAN Diamond™ for ultimate durability and an ultra-realistic woodgrain aesthetic.



Need guidance and advice?  
We're ready to help.

**Screenwood Australia**

432 The Boulevard  
Kirrawee NSW 2232  
Australia

+61 2 9521 7200

hello@screenwood.com.au

**Be inspired**

Explore our product innovations and  
get inspired at [screenwood.com.au](https://screenwood.com.au)

**Disclaimer** All care is taken in the preparation of the information and published materials produced by Screenwood. However, Screenwood does not make any representations or give any warranties about its accuracy, reliability, completeness or suitability for any particular purpose.

Version: 03-2025-V1

**Acknowledgement of Country**

In the spirit of reconciliation, we acknowledge the Traditional Custodians of Country throughout Australia and their connections to land, sea and community. We pay our respect to their Elders past and present and extend that respect to all Aboriginal and Torres Strait Islander peoples today.

**Screenwood for all**

Our products are for everyone, and so is our workplace. We believe in constantly building a diverse and inclusive culture for a more equitable world.

