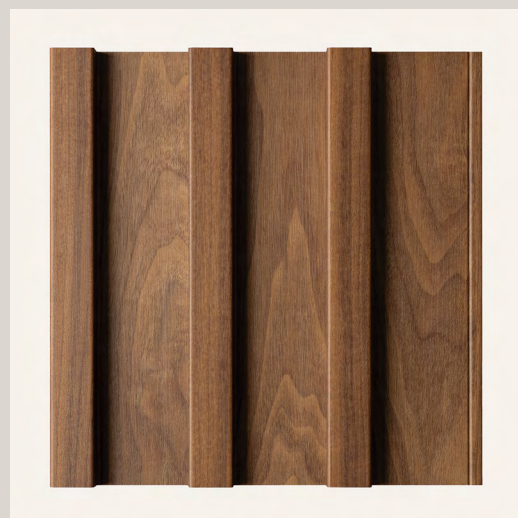
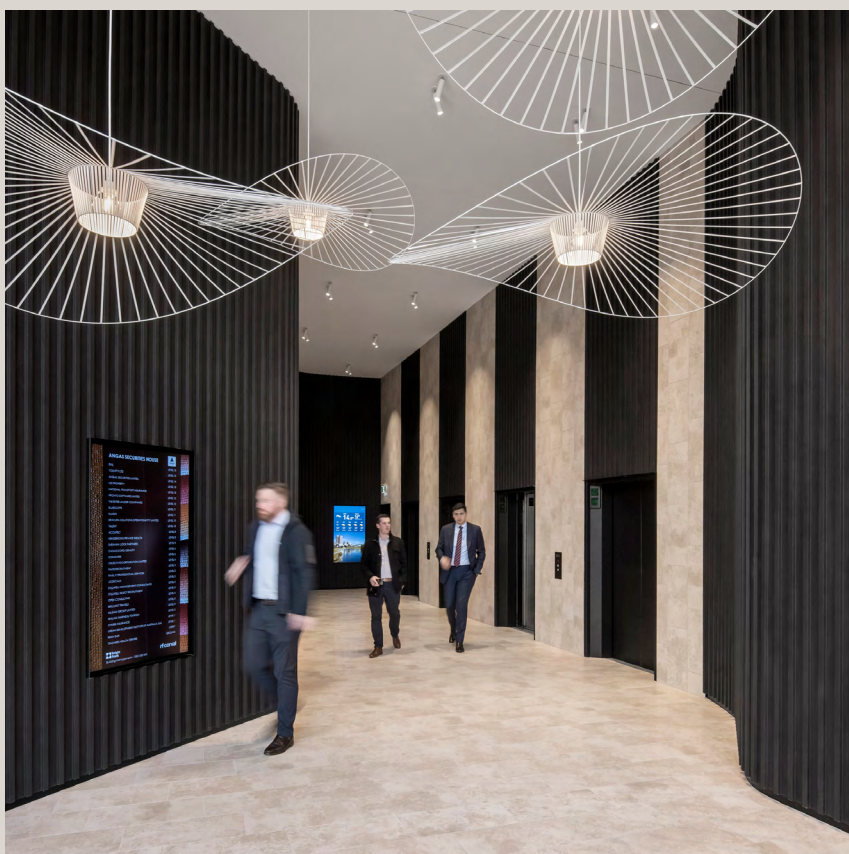


**Install Guide**

# Modulo<sup>®</sup> MR Modulo<sup>®</sup> FR

The prefinished, sculpted tongue and groove lining system.







Modulo® MR, Batten  
finished in NAVURBAN™  
Toorak



# Modulo® MR and Modulo® FR Installation Guide

## Suitable Applications

Modulo® MR is a Group 3 fire-rated tongue and groove lining board made from Moisture Resistant (MR) Fibreboard. Modulo® FR is made from Fire Resistant (FR) Fibreboard and achieves a Group 2 fire rating.

Modulo® is designed for ceiling, walls, curves and joinery applications in both vertical and horizontal orientations. It is not suitable for use in wet areas or external use. For resistance to wear and UV please see our technical data sheet.

## Before you begin

---

### Fixing

- Screenwood recommends that Modulo® should be screw fixed to timber battens or furring channel spaced at a maximum of 600mm centres (see Figure 1 in this section).
- An 8-gauge countersunk screw should be used for fixing, and located on the panels using the centring groove on the tongue. A polyurethane adhesive is to be applied to the furring channel prior to Modulo® being fitted (Fig. 1).

---

### Cutting

- Cutting of Modulo® should be done by qualified trades using a drop saw or panel saw with carbide tipped blades and can be cut with the use of routers, trimmers and other joinery tools typically used when fabricating MDF.

---

### Curving

- Modulo® can be curved on both internal and external radii depending on the profile ranging from 100mm - 400mm (see note on Finishing Options).

---

### Moisture

- Although Modulo® MR is manufactured from moisture resistant (MR) MDF, the end grain of Modulo® MR cannot get wet. Section ends should be sealed in installations where accidental ingress of water or moisture may occur.
- Modulo® used for walls should be kept at least 20mm above a floor surface and care must be taken when floors are being mopped/cleaned. The warranty does not cover damage from water ingress.
- In applications where there is a risk of exposed MDF coming in contact with water potentially affecting the exposed MDF section of each panel, you should look to apply a water based polyurethane clear sealer like the Cabots Cabothane Clear.

# Wall, Ceiling and Joinery Installation

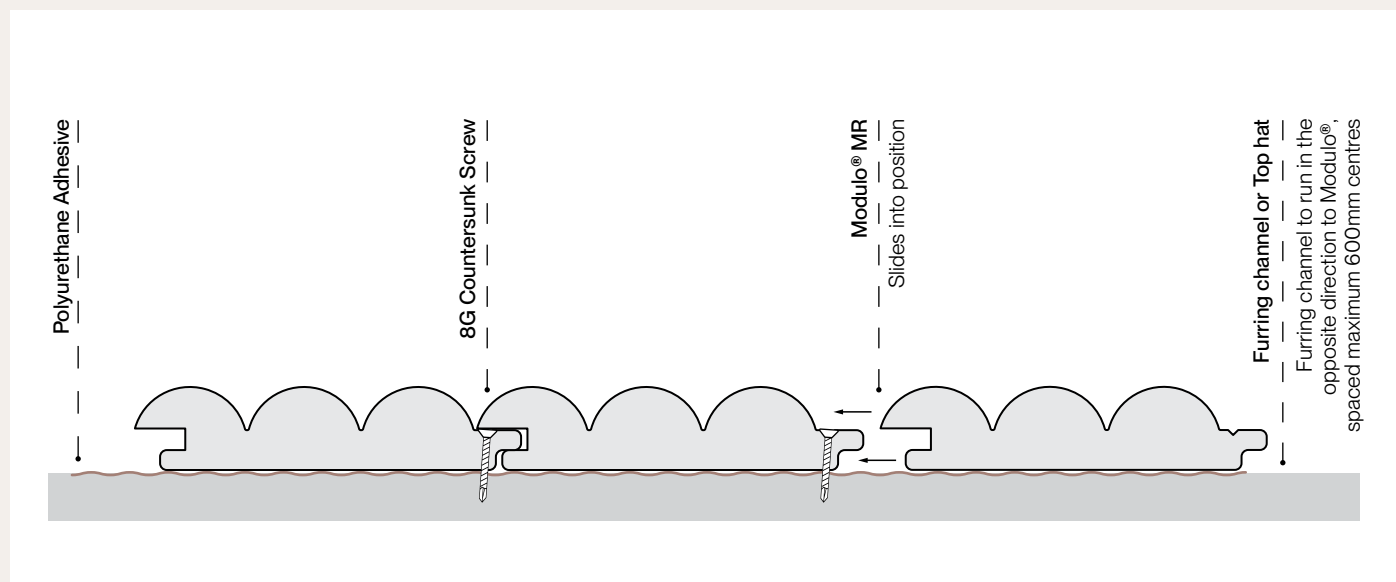
## Modulo® MR and Modulo® FR

### Recommended Installation

You will need:

- Modulo® in your specified lengths including wastage
- Top hat, furring channel or battens
- Aluminium trims for top and bottom edges (if required)
- Start trim (if required)
- Measuring device/Level
- Panel saw or track saw with a suitable blade
- 8g countersunk screws
- Construction adhesive

Figure 1. Glue profile to wall or ceiling, concealing screws



# Wall, Ceiling and Joinery Installation

## Modulo® MR and Modulo® FR

### Joints

- Modulo® may be butt joined where required, however alignment of the adjoining panel must be perfect for a seamless joint. Butt joints should be staggered to avoid straight unsightly lines. If a straight joint is desired, we recommend an express joint of 5mm.
- Expansion joints for Modulo® must be considered on all installations where the runs exceed 5.4m in either direction. Consideration of the suitability of Modulo® must be taken prior to purchase.

### Profile Weights

- For Modulo® profile weights, please refer to the Technical Data Sheet available on our website when calculating load capabilities, found at [screenwood.com.au/range/modulo-mr/](https://screenwood.com.au/range/modulo-mr/) or contact our team for information.



# Finishing Options

## Modulo® MR and Modulo® FR

---

### Curves

- Modulo® MR can accommodate curves by cutting a 3mm wide relief into the back of the panels, placed as indicated on individual Profile Specification Sheets, found at [screenwood.com.au/resources/](https://screenwood.com.au/resources/).
- The relief cut panels can be manipulated during installation to adhere to concave or convex surfaces, keeping within the maximum radius. Profile depth and maximum radius are provided in the individual Profile Specification Sheets.

### Corners

Modulo® MR can be mitred for a seamless corner finish with both vertical and horizontal applications.

#### Mitred corner

1. Cut the end of the panel (horizontally or vertically depending on the end requiring the desired finish) using a panel saw.
2. Make a 45° cut to end. You will need an additional panel to cut another 45° section from for joining. Use a good quality PVA glue.

#### Rebated corner

1. Cut the groove-side of the panel as shown on individual Profile Specification Sheets.
2. Butt the groove-side of two panels together on external corners, concealing the groove and cut end. Work away from the corner until your surface is covered.

Figure 2. Relief cuts allow the profile to curve



Figure 3. Relief cuts allow the profile to curve



Figure 4. Vertical Mitre



Figure 5. Rebated Corner





# Finishing Options

## Modulo® MR and Modulo® FR

---

### Edge Tape

Modulo® can accommodate 1.0mm edge tape which can be supplied by New Age Veneers (NAV) in a matched finish for edge lining.

---

### Other Trim Details

- Stix™ by Screenwood are loose prefinished battens that can be used for trim or framing. See page 8 for additional information.
- Board in the same finish can be supplied through New Age Veneers (NAV), starting from 6mm thick up to 50mm thick.
- Aluminium angles (supplied by others) can be utilised for shadowline trim or framing.

---

### Painted Finish

Dulux paint colours to match our standard NAVURBAN™ finishes can be found on the Resources page of our website. These recommendations are a guide only and should be tested prior to application.

Preparation is always critical when applying a painted finish, sanding the profiles prior to undercoating and light sanding between coats is required to ensure a high quality finish. We don't recommend applying Modulo® to curved areas when applying a painted finish.

Painted finishes are only suitable for the raw surfaces of the profiles. Olefin film surfaces are not suitable for painting.

Figure 6. Edge tape from NAV



# Finishing Options

## Modulo® MR and Modulo® FR

---

### Stix® by Screenwood

Stix® are loose decorative timber battens, available in a range of sizes and profiles and prefinished in NAVURBAN™ finishes. Stix® integrates seamlessly with our Modulo®, Soundlina® and Panels ranges, or can be used as standalone decorative battens. To learn more visit <https://screenwood.com.au/range/stix/>.



**Modulo® MR, Batten, Stix® 9032**  
finished in NAVURBAN Diamond™  
White Mountaun Oak





# Care and Maintenance Guide

---

## Recommended cleaning method

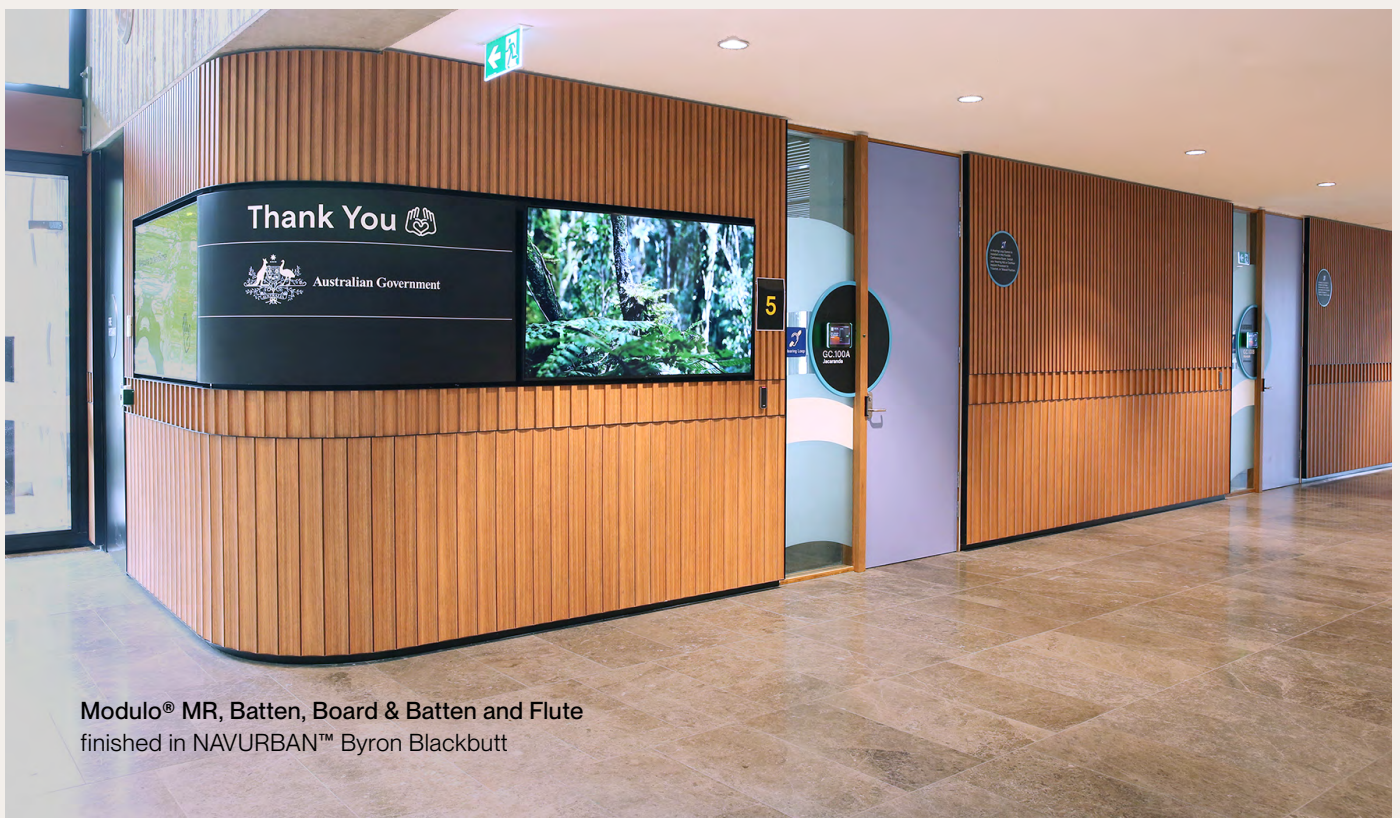
NAVURBAN™ surfaces are easy to clean using a damp cloth and mild soap and warm water or non-abrasive wood cleaning products.

- Do not use abrasive cleaners, pads, or harsh solvents.
- Ensure to wipe in the direction of the grain structure for best results.

We recommend you test on a small area or sample prior to applying to surface.

- Do not allow and solvent, acetone or trichloroethylene to come in contact with the surface.
- Accidental spills, splatters or over sprays should be wiped off immediately with a soft cloth and mild soap.
- Alcohol, ammonia and other light solvents may be used for tougher stains.

If in doubt about a particular cleaner or detergent, please reach out to your designated representative to assist with suitability.





**SCREEN  
WOOD**

We're ready to help.

**Screenwood Australia**

432 The Boulevard  
Kirrawee NSW 2232  
Australia

+61 2 9521 7200

[hello@screenwood.com.au](mailto:hello@screenwood.com.au)

**Be inspired**

Explore our product innovations and  
get inspired at [screenwood.com.au](https://screenwood.com.au)

**Acknowledgement of Country**

In the spirit of reconciliation, we acknowledge the Traditional Custodians of Country throughout Australia and their connections to land, sea and community. We pay our respect to their Elders past and present and extend that respect to all Aboriginal and Torres Strait Islander peoples today.

**Screenwood for all**

Our products are for everyone, and so is our workplace. We believe in constantly building a diverse and inclusive culture for a more equitable world.

**Disclaimer** All care is taken in the preparation of the information and published materials produced by Screenwood. However, Screenwood does not make any representations or give any warranties about its accuracy, reliability, completeness or suitability for any particular purpose.