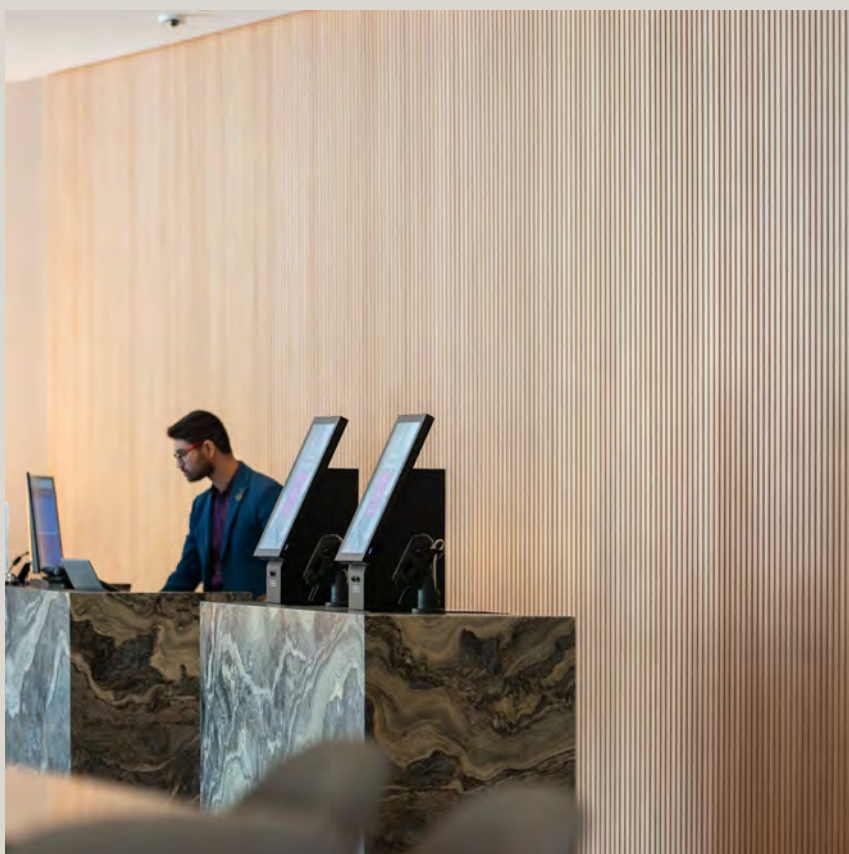


**Install Guide**

# Modulo<sup>®</sup> Acoustic

The prefinished Group 1 tongue and groove system for acoustic performance, superior fire protection and aesthetics.







Modulo® Acoustic  
ceiling installation

# Modulo® Acoustic Installation Guide

## Suitable Applications

Modulo® Acoustic tongue and groove is manufactured from aluminium and is suitable for internal ceiling, curves and wall applications. It is not warranted for use in external areas.

Modulo® Acoustic is a Group 1 fire rated product designed to meet the requirements of almost any commercial interior application where reverberation control is paramount, without compromise.

## Before you begin

---

### Fixing

- Modulo® Acoustic is designed as a tongue and groove panel system which allows for a concealed fix to any metal top hat or furring channel. There is a screw flute for a 6g countersunk screw extruded the length of each panel for fixing at any intersection with a structural member.

---

### Cutting

- The Modulo® Acoustic sections can be cut to size using a panel saw or track saw with a suitable aluminium blade.
- Flats on the back of the profile allow for adhesive fixing when profiles require cutting to fit the space.

---

### Curving

- Modulo® Acoustic can be installed on both internal and external curves with a radius up to 300mm.
- Curving can be achieved by using discreet fixings through the perforations and manipulating to the desired radius during install.
- For tight radiuses clamping on a bench and manipulating the profile to the desired radius before install may be beneficial.

---

### Profile Weights

- For Modulo® Acoustic profile weights, please allow 10.5kg/m<sup>2</sup> when calculating load capacities.
-



# Modulo® Acoustic Installation Guide

## Detailing

---

- Screenwood recommends generic aluminium profiles (powdercoated in a suitable finish colour) for top and bottom detailing.
- Find additional examples in our Technical Gallery at [screenwood.com.au/technical-gallery/](https://screenwood.com.au/technical-gallery/).



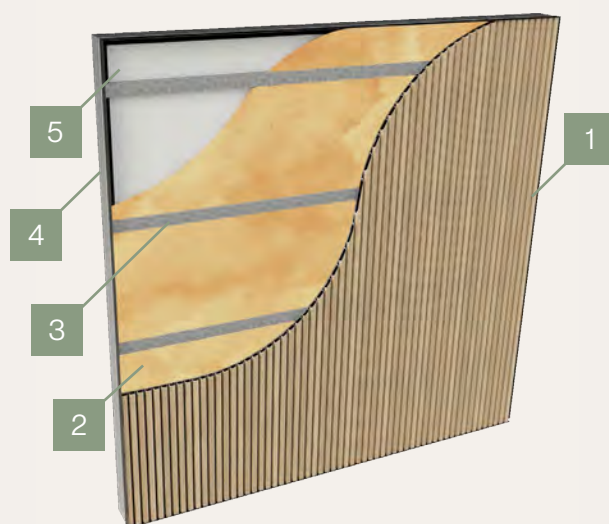
# Flat Wall Installation Modulo® Acoustic

## Recommended Flat Wall Installation Process

You will need:

- Modulo® Acoustic in your specified lengths including wastage
- Top hat, furring channel or battens
- Aluminium trims for top and bottom edges (if required)
- Start trim (if required)
- Measuring device
- Level
- Panel saw or track saw with a suitable aluminium blade
- 6g countersunk screws
- Construction adhesive
- Acoustic batts

**Figure 1. Cross section of Modulo® Acoustic wall installation**



- 1 Modulo® Acoustic lining
- 2 Acoustic insulation as tested
- 3 Top hat
- 4 Aluminium trim (if required)
- 5 Sound transmission barrier (e.g. plasterboard/masonry)

# Simple Steps for Flat Wall Installation

## Step 1

Ensure the prepared wall surface is true and plumb. Ensure protective packaging is removed from Modulo® Acoustic before installing.

## Step 2

Fix top hat or battens at the top and bottom of the wall at the heights where the panels are to be installed. (See fig.2)

## Step 3

In addition to top and bottom, install additional top hat parallel to the top and bottom channels at a maximum distance of 600mm. (See fig.2)

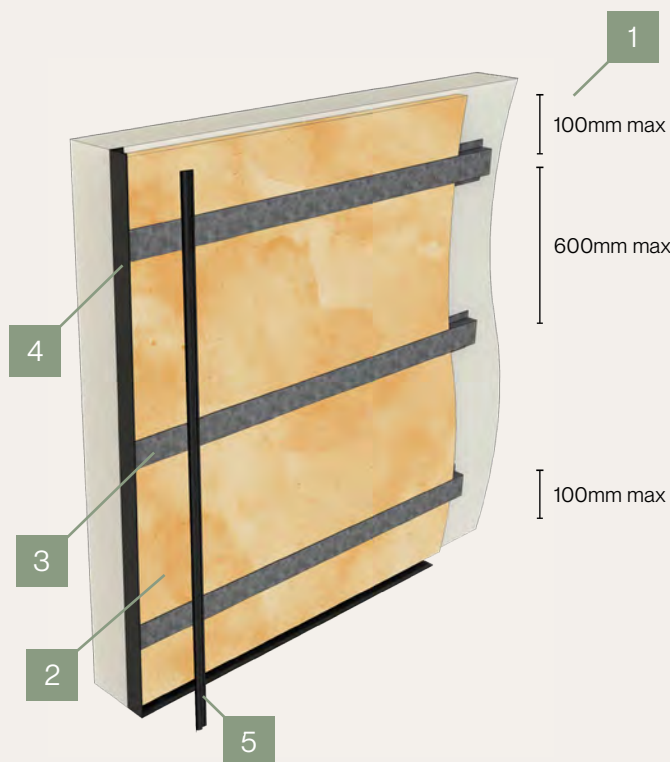
## Step 4

If installing top and bottom aluminium trims, install the bottom trim allowing for the desired shadow line spacing (if applicable). (See fig.2)

## Step 5

Install the optional start trim (or screw fix the first panel) to the top hat ensuring it is plumb. (See fig.2)

**Figure 2.** Top hat at 600mm apart, aluminium trim and start trim



- 1 Spacing for top hat or battens
- 2 Acoustic insulation as tested
- 3 Top hat
- 4 Aluminium trim (if required)
- 5 Start trim (optional)

# Simple Steps for Flat Wall Installation

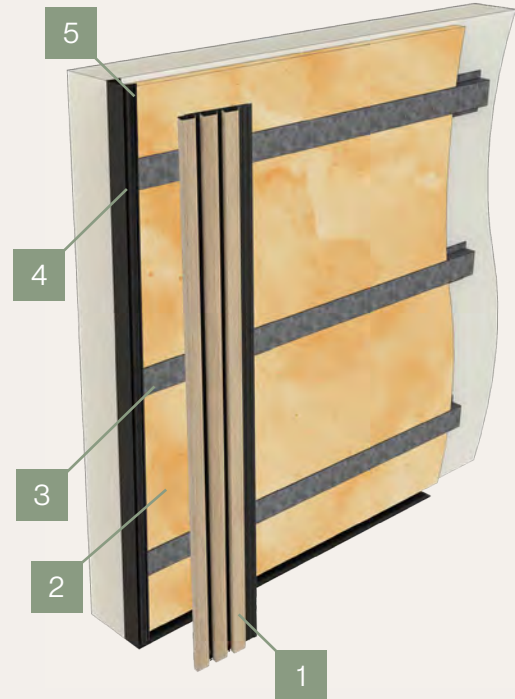
## Step 6

Screw fix each section through each tongue where it intersects the furring channel or battens. Pre-drilling may be required. (See fig.4)

## Step 7

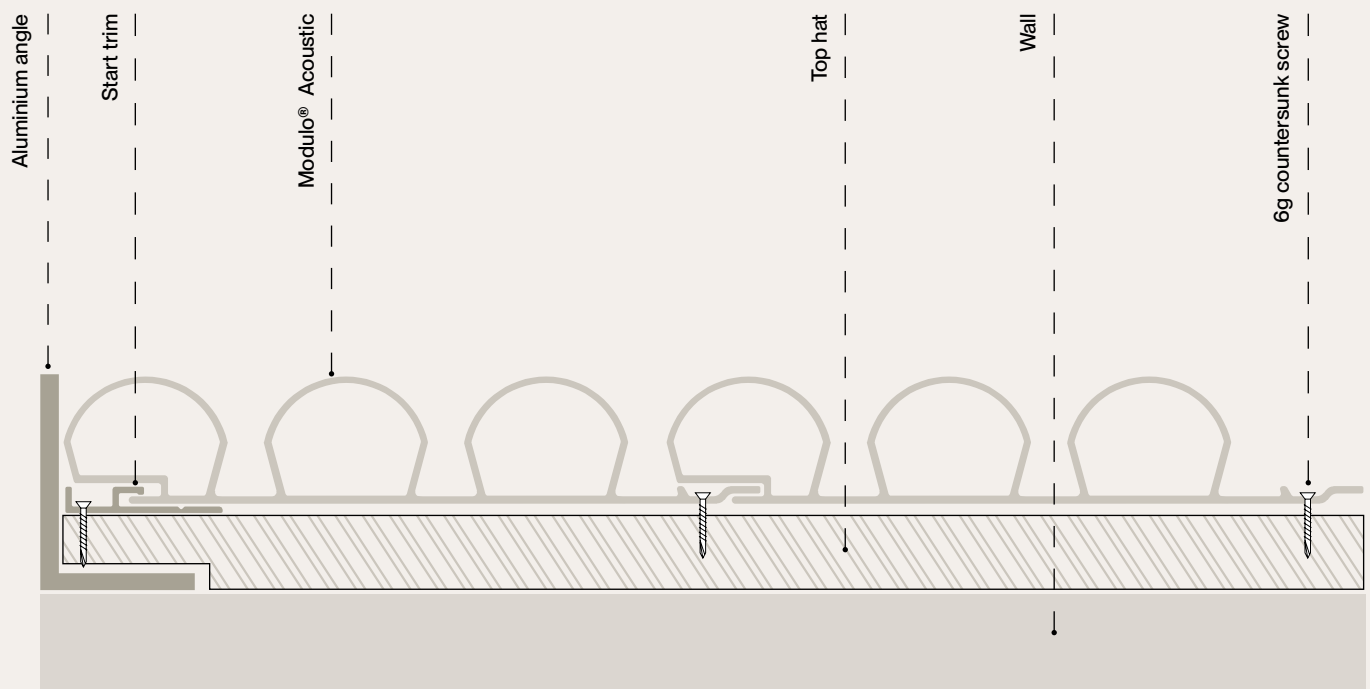
Continue fixing each section. (See fig.5)

Figure 3. Installing first Modulo® Acoustic panel



- 1 Modulo® Acoustic lining
- 2 Top hat
- 3 Acoustic insulation as tested
- 4 Start trim (optional)
- 5 Aluminium trim (if required)

Figure 4. Section view of concealed screw installation of Modulo® Acoustic



# Simple Steps for Flat Wall Installation

## Step 8

At the end of the run, the last piece may need to be cut at a specific width using a panel saw or track saw with an appropriate aluminium blade and safety measures in place.

Construction adhesive may need to be applied to the back of the last panel in conjunction with fixings through the perforated slots in the panel. (See fig.6)

Where using construction adhesive it is recommended the acoustic lining is cut out on the back of the battens (not perforations) to give a direct bond to the aluminium.

## Step 9

Wipe down with a clean damp cloth.

Figure 5. Continue fixing Modulo® Acoustic



Figure 6. Section view of cuts and adhesive example





# Curved Wall Installation Modulo® Acoustic

## Recommended Curved Wall Installation Process

You will need:

- Modulo® Acoustic in your specified lengths including wastage
- Top hat, furring channel or battens
- Aluminium trims for top and bottom edges (if required)
- Start trim (if required)
- Measuring device
- Level
- Panel saw or track saw with a suitable aluminium blade
- 6g countersunk screws
- Construction adhesive
- Acoustic batts
- Bench clamp may be beneficial for tight radiuses

### Step 1

Ensure protective packaging is removed from Modulo® Acoustic before installing.

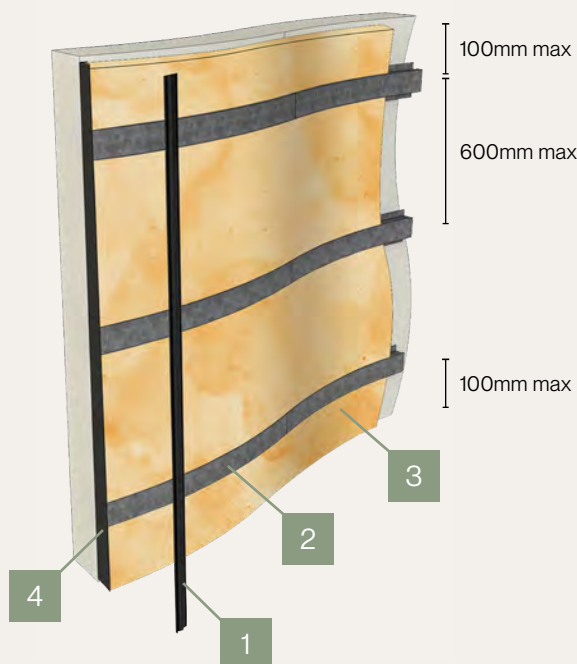
### Step 2

Fix top hat or battens at the top and bottom of the wall at the heights where the Modulo® Acoustic is to be installed. (See fig.7)

### Step 3

Install additional top hat parallel to the top and bottom channels at a maximum distance of 600mm. (See fig.7)

Figure 7. Top hat at 600mm apart, aluminium trim and start trim



- 1 Start trim (optional)
- 2 Top hat
- 3 Acoustic insulation as tested
- 4 Aluminium trim (if required)

# Curved Wall Installation

## Modulo® Acoustic

### Step 4

If installing top and bottom aluminium trims, install the bottom trim allowing for the desired shadow line spacing (if applicable).

### Step 5

Install the optional start trim (or screw fix the first panel) to the top hat ensuring it is plumb. (See fig.8)

### Step 6

Manipulate the Modulo® Acoustic to the desired radius (up to 300mm) by using discreet fixings through the perforations. If necessary, clamping on a bench and manipulating the profile may be beneficial prior to installing.

### Step 7

Continue fixing each section. (See fig.9)

### Step 8

At the end of the run, the last piece may need to be cut at a specific width using a panel saw or track saw with an appropriate aluminium blade and safety measures in place.

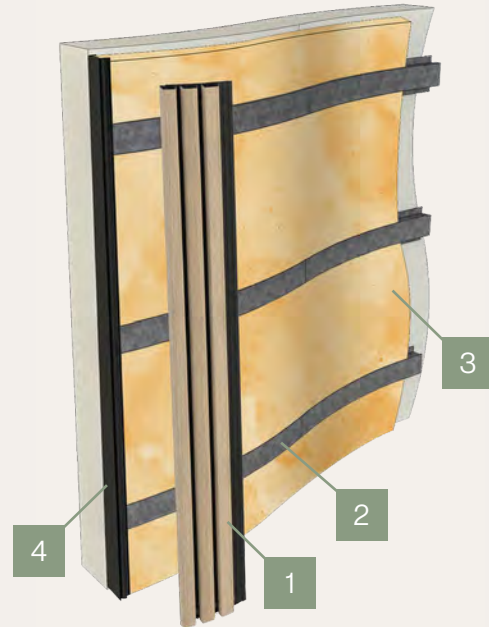
Construction adhesive may need to be applied to the back of the last panel in conjunction with fixings through the perforated slots in the panel.

Where using construction adhesive, it is recommended the acoustic lining is cut out on the back of the battens (not perforations) to give a direct bond to the aluminium.

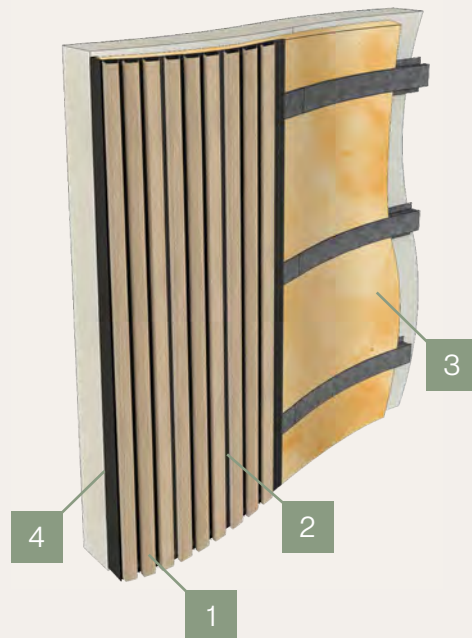
### Step 9

Wipe down with a clean damp cloth.

**Figure 8.** Installing first Modulo® Acoustic panel



**Figure 9.** Manipulate to desired radius using discreet fixings



- 1 Modulo® Acoustic lining
- 2 Top hat
- 3 Acoustic insulation as tested
- 4 Aluminium trim, if required

# Ceiling Installation

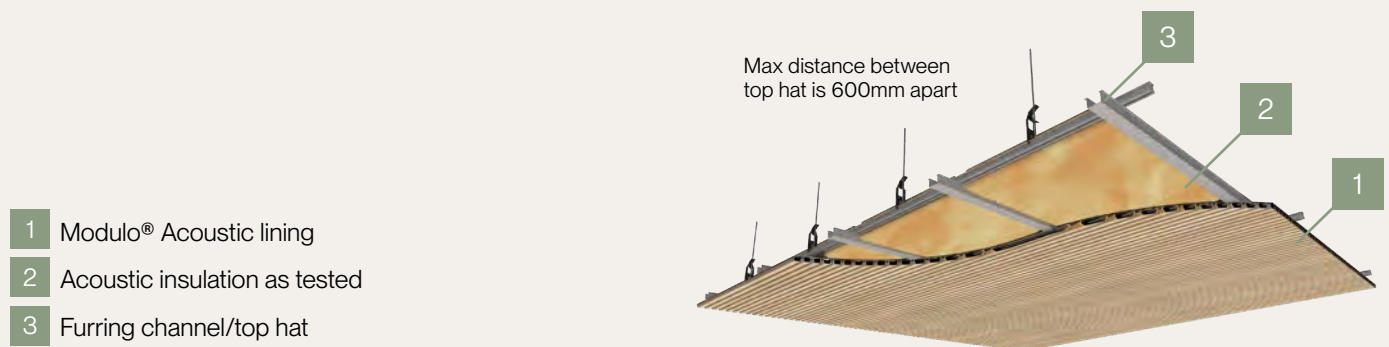
## Modulo® Acoustic

### Recommended Ceiling Installation Process

You will need:

- Modulo® Acoustic in your specified lengths including wastage
- Top hat, furring channel or battens
- Aluminium trims for top and bottom edges
- Start trim
- Measuring device
- Level
- Panel saw or track saw with aluminium blade
- Screws
- Construction adhesive
- Acoustic batts

Figure 10. Typical suspended ceiling detail



# Simple Steps for Ceiling Installation

## Ceiling Preparation

### Step 1

Ensure the ceiling is true and the variation is no greater than 3mm per metre.

### Step 2

If installing on a suspended ceiling the Modulo® Acoustic panels are installed in the same direction as the TCR and fixed off where it intersects the furring channel. For direct fix ceilings, fix the top hat in the opposite direction to the Modulo® Acoustic panels. (See fig.11)

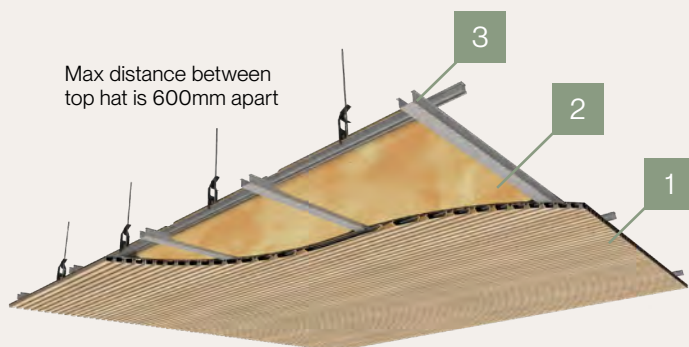
### Step 3

The furring channel or top hat should be placed within 200mm of the walls and at a maximum of 600mm centres.

### Step 4

A shadowline angle is a common detail used around the perimeter and this should be fixed to the wall at the nominated height prior to installing the panels. (See fig.14, page 13)

Figure 11. Typical suspended ceiling detail



- 1 Modulo® Acoustic lining
- 2 Acoustic insulation as tested
- 3 Furring channel/top hat



# Simple Steps for Ceiling Installation

## Ceiling Installation

### Step 1

Fix the first panel in position either using a start trim (optional) or by discreet face fix through the perforated profile. (See fig.12)

### Step 2

Slot the groove of the first board into the start trim and fix through the tongue using an appropriate 6g screw. Screw fix each section through each tongue where it intersects the top hat. Pre-drilling may be required. (See fig.13,

### Step 3

Continue fixing the Modulo® Acoustic panels across the ceiling. (See fig.12)

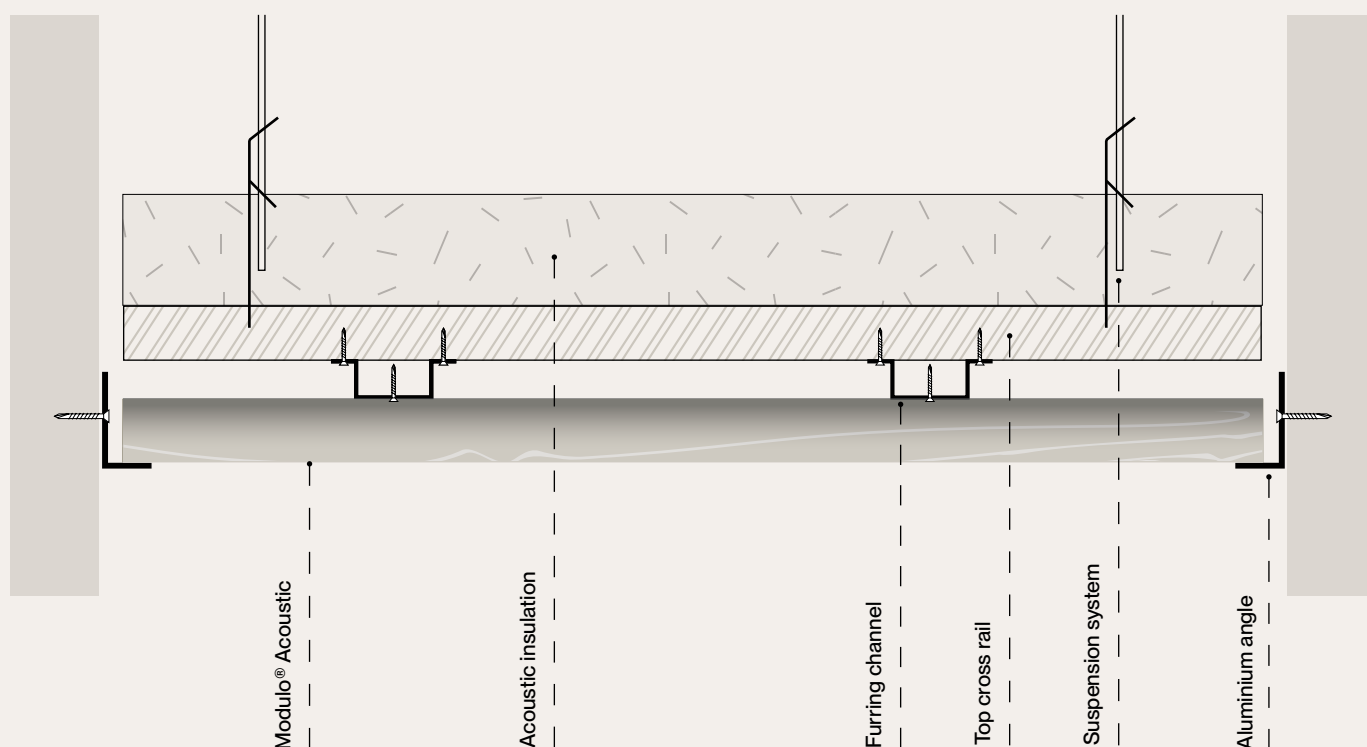
### Step 4

The final panel will need to be fixed using a combination of construction adhesive and a discreet fixing through the perforated section of the profile. (See fig.12)

### Step 5

Wipe down with a clean, damp cloth.

Figure 12. Suspended ceiling cross section at 90°, aluminium angle fixed to wall



# Additional Views

## Ceiling Installation

Figure 13. Suspended ceiling cross section

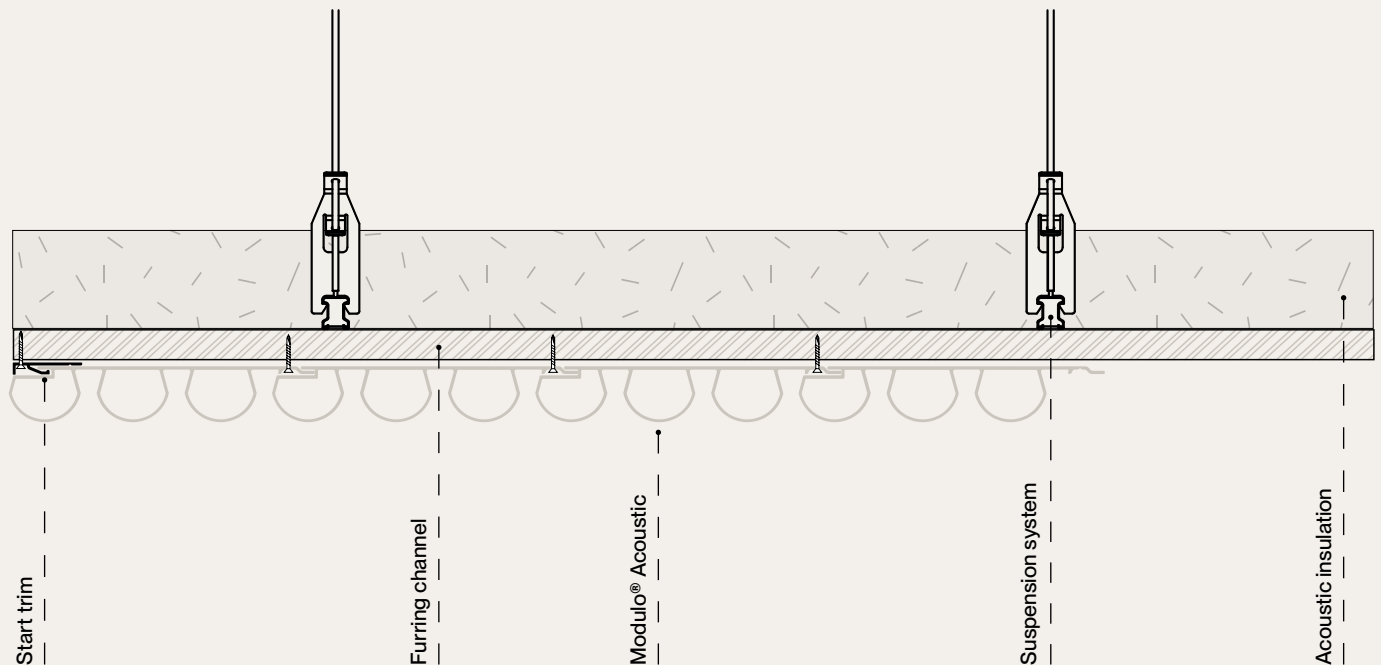
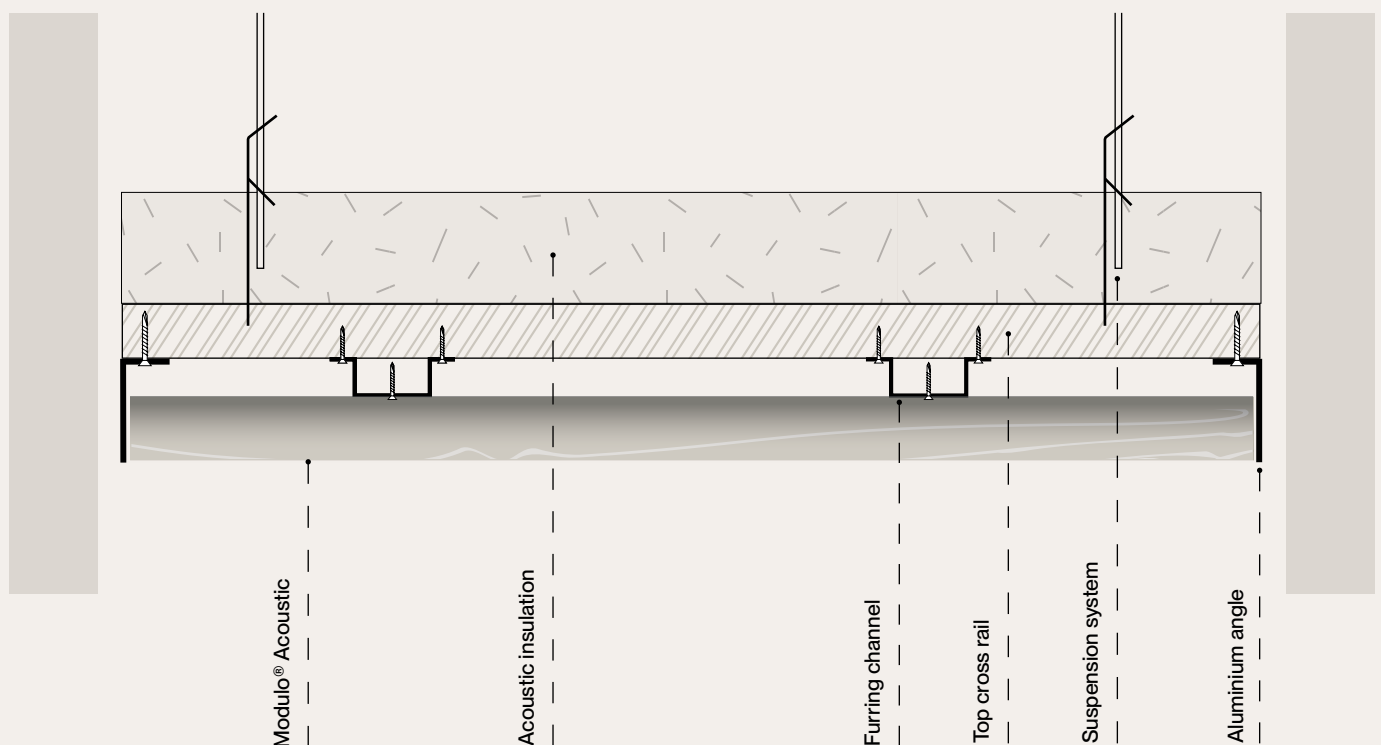


Figure 14. Example of suspended ceiling cross section at 90°, aluminium angle fixed to top cross rail for shadowline detail



# Finishing Options

## Modulo® Acoustic

Modulo® Acoustic can be finished in a variety of ways including aluminium trims and matching Stix® battens.

---

### Screenwood Starter Bead

- For a professional finish, use Screenwood starter bead for walls. Select the custom starter bead to match the profile you are using.

**Figure 15.** Starter bead for Modulo® Acoustic, Dome profile



### Screenwood Corner Trim

- For a seamless corner finish with both vertical and horizontal applications, use a Screenwood corner trim.

**Figure 16.** Corner trim for Modulo® Acoustic, Dome profile



---

## Stix® by Screenwood

Stix® are loose decorative timber battens, available in a range of sizes and profiles and prefinished in NAVURBAN™ finishes. Stix® integrates seamlessly with our Modulo®, Soundlina® and Panels ranges, or can be used as standalone decorative battens. To learn more visit <https://screenwood.com.au/range/stix/>.

Note: Stix is not available in a Group 1 fire rating. Please ensure suitability for use in your project.



# Care and Maintenance Guide

## Recommended cleaning method

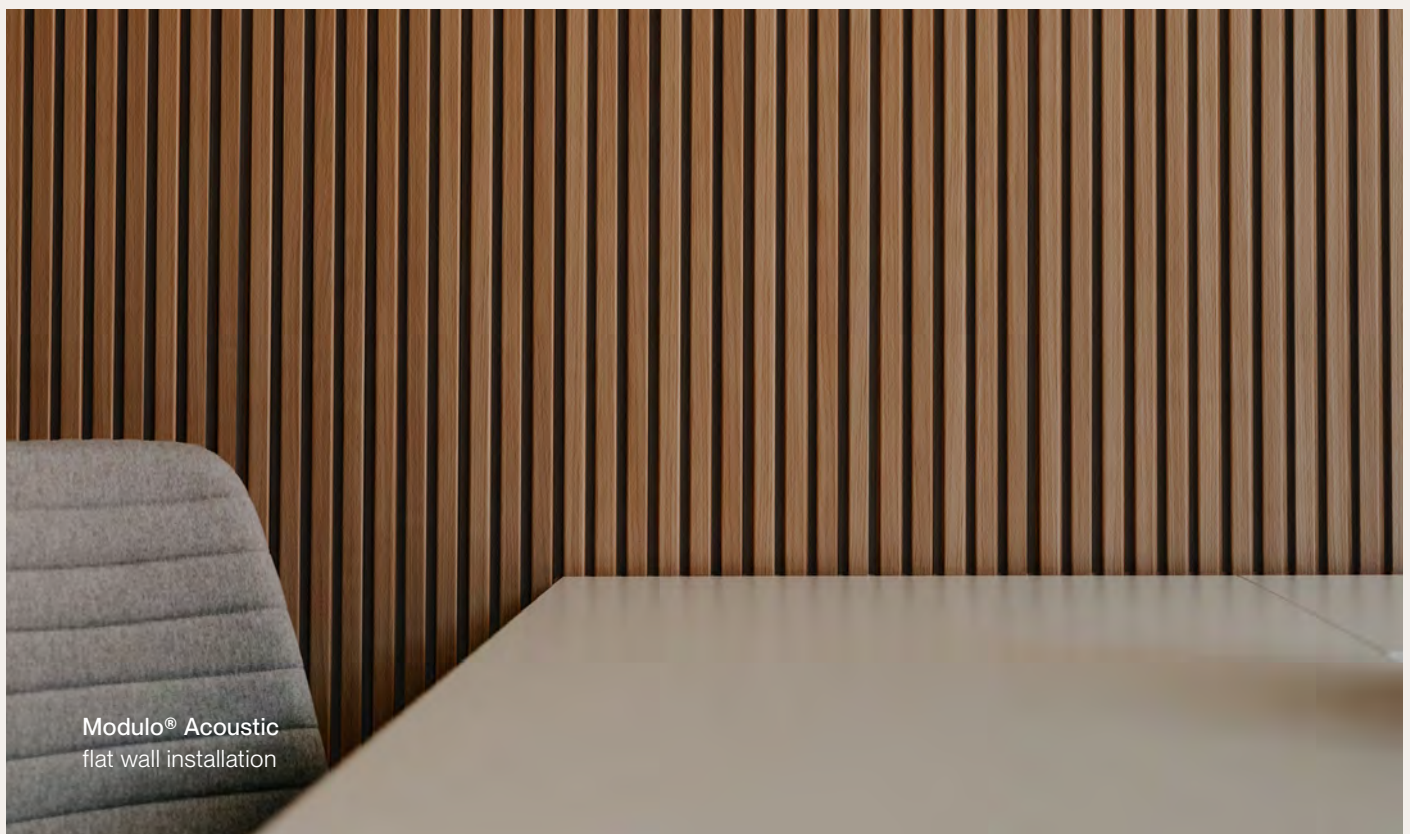
NAVURBAN™ surfaces are easy to clean using a damp cloth and mild soap and warm water or non-abrasive wood cleaning products.

- Do not use abrasive cleaners, pads, or harsh solvents.
- Ensure to wipe in the direction of the grain structure for best results.

We recommend you test on a small area or sample prior to applying to surface.

- Do not allow solvent, acetone or trichloroethylene to come in contact with the surface.
- Accidental spills, splatters or over sprays should be wiped off immediately with a soft cloth and mild soap.
- Alcohol, ammonia and other light solvents may be used for tougher stains.

If in doubt about a particular cleaner or detergent, please reach out to your designated representative to assist with suitability.







**SCREEN  
WOOD**

We're ready to help.

**Screenwood Australia**

432 The Boulevard  
Kirrawee NSW 2232  
Australia

**+61 2 9521 7200**

**hello@screenwood.com.au**

**Be inspired**

Explore our product innovations and  
get inspired at **screenwood.com.au**

**Acknowledgement of Country**

In the spirit of reconciliation, we acknowledge the Traditional Custodians of Country throughout Australia and their connections to land, sea and community. We pay our respect to their Elders past and present and extend that respect to all Aboriginal and Torres Strait Islander peoples today.

**Screenwood for all**

Our products are for everyone, and so is our workplace. We believe in constantly building a diverse and inclusive culture for a more equitable world.

**Disclaimer** All care is taken in the preparation of the information and published materials produced by Screenwood. However, Screenwood does not make any representations or give any warranties about its accuracy, reliability, completeness or suitability for any particular purpose.